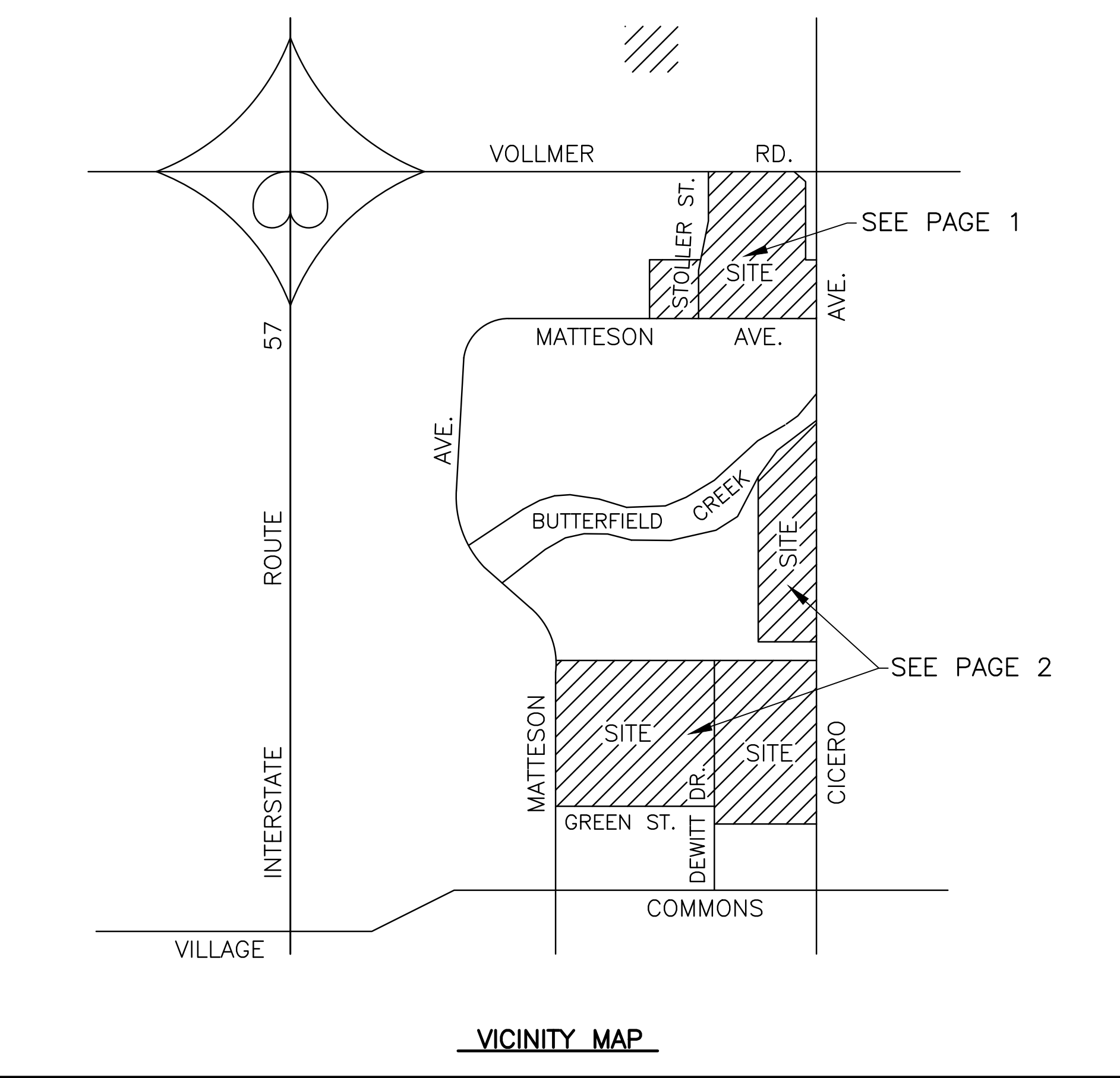
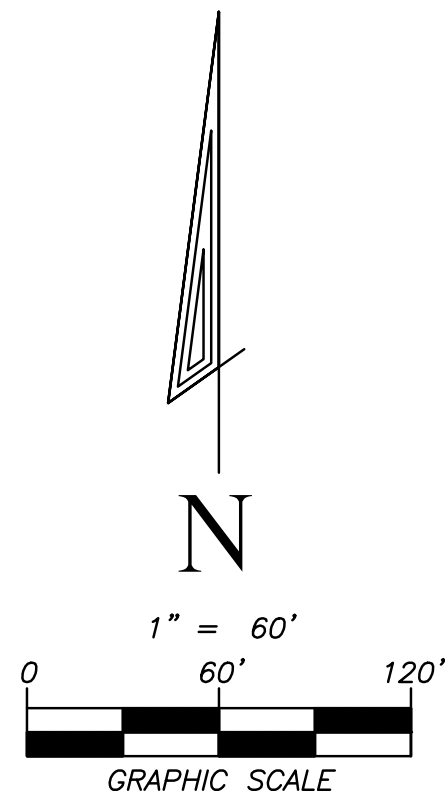
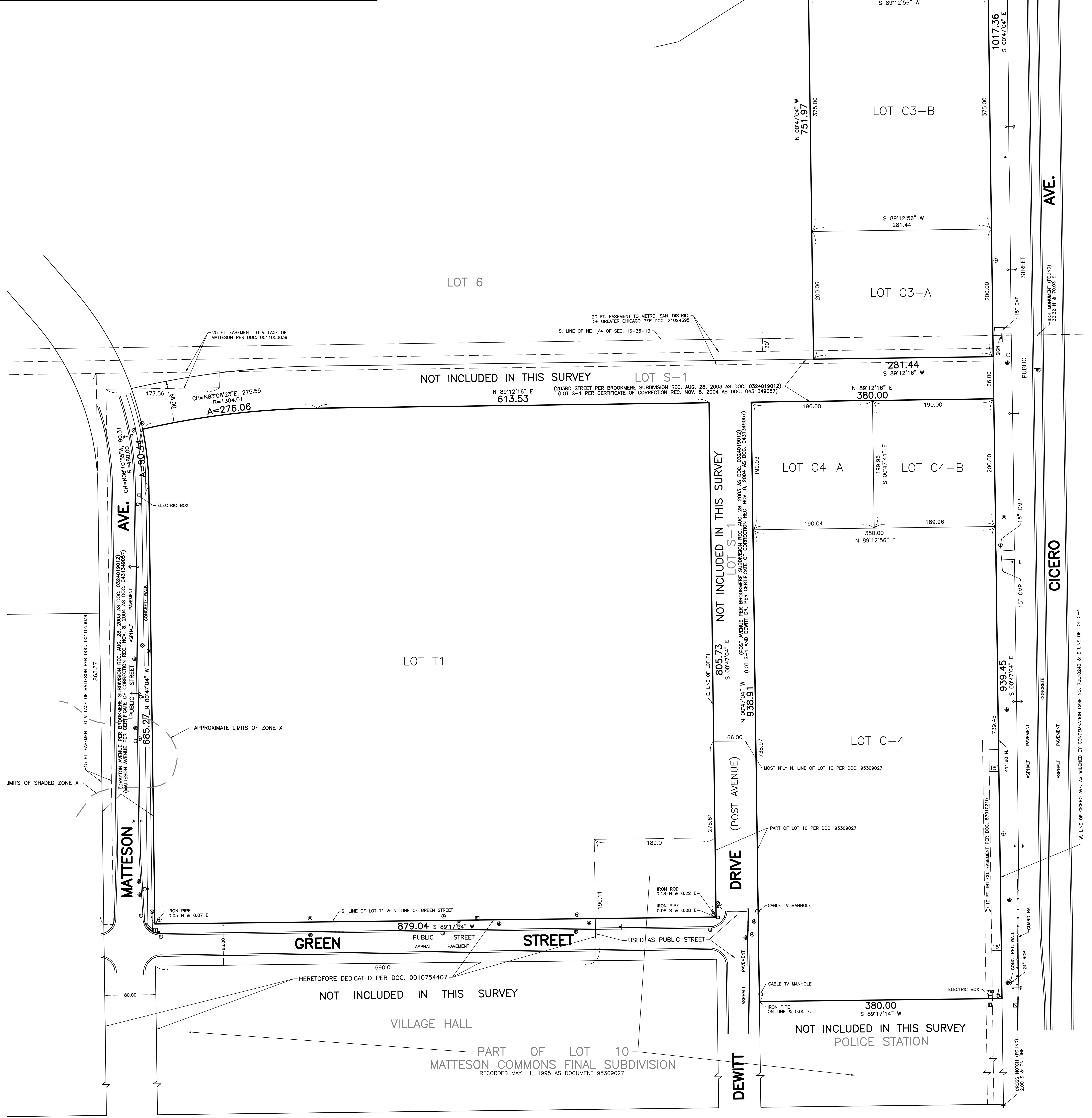


EDWARD J. MOLLOY & ASSOCIATES
 A DIVISION OF THOMAS A. MOLLOY, LTD. — PROFESSIONAL LAND SURVEYING
 1236 MARK STREET, BENSenville, ILLINOIS 60106 (630) 595-2600 Fax (630) 595-4700
 e-mail: tmolloy@ejmolloy.com

ALTA/NSPS LAND TITLE SURVEY



VICINITY MAP



| | | | |
|-------------------|-----------|-------------|--|
| DRAFTED BY: BJE | | | |
| PAGE: 2 OF 2 | | | |
| ORDER NO.: 180188 | | | |
| FILE: 16-35-13 | | | |
| PROJECT NO.: 1810 | | | |
| REVISION DATE | ORDER NO. | REVISION | |
| SEPT. 12, 2018 | 180188 | ALTA SURVEY | |

VILLAGE COMMONS

AVE.

CICERO

W. LINE OF CICERO AVE. AS WIDENED BY CONDEMNATION CASE NO. 70-10240 & E. LINE OF LOT C-4