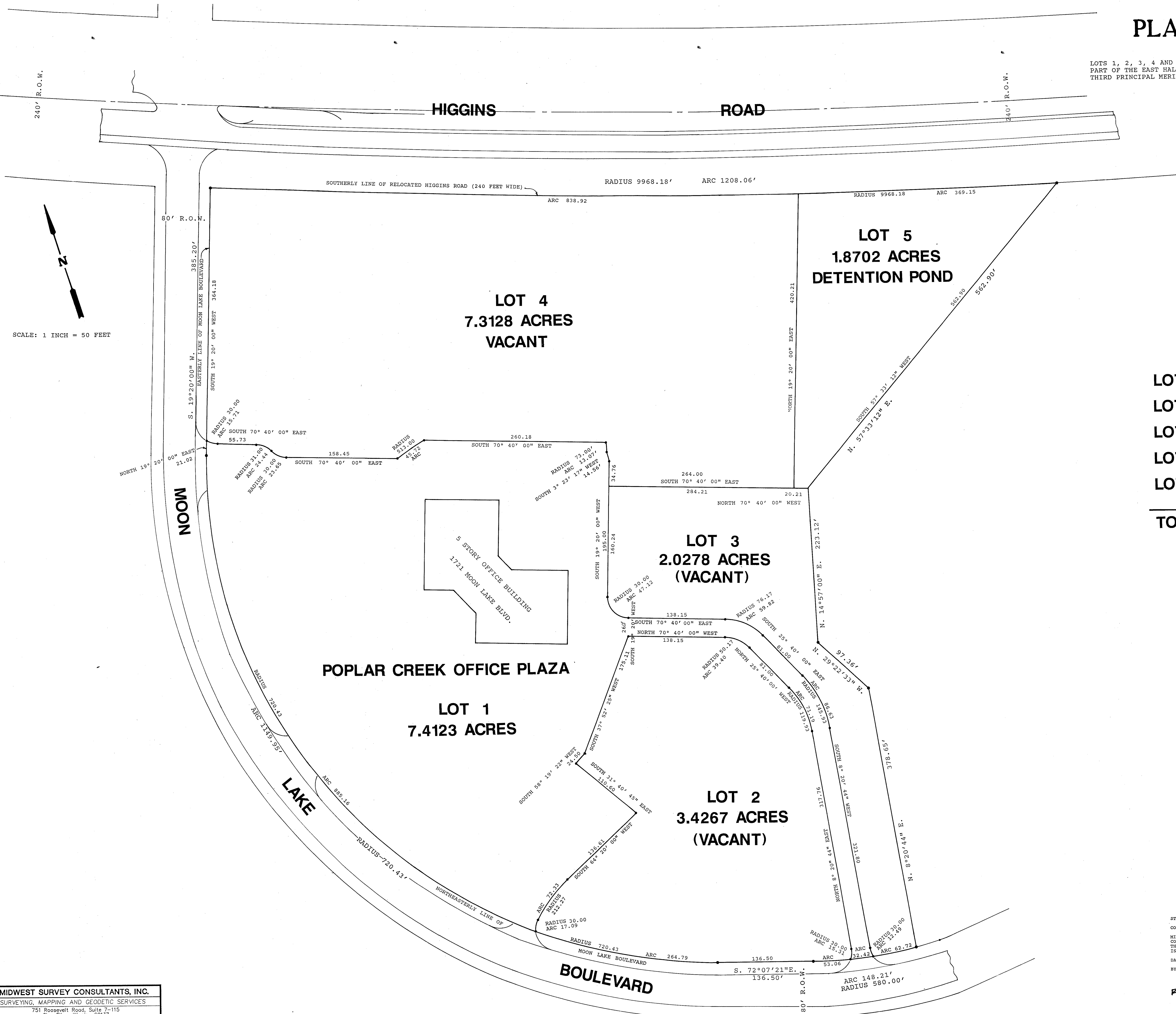


# PLAT OF SURVEY

LOTS 1, 2, 3, 4 AND 5 IN POPLAR CREEK OFFICE PLAZA, BEING A SUBDIVISION OF PART OF THE EAST HALF OF SECTION 7, TOWNSHIP 41 NORTH, RANGE 10 EAST OF THE THIRD PRINCIPAL MERIDIAN, IN COOK COUNTY, ILLINOIS.



LOT 1	7.4123	ACRES
LOT 2	3.4267	ACRES
LOT 3	2.0278	ACRES
LOT 4	7.3128	ACRES
LOT 5	1.8702	ACRES
<b>TOTAL</b>	<b>22.0498</b>	<b>ACRES</b>

**MIDWEST SURVEY CONSULTANTS, INC.**  
 SURVEYING, MAPPING AND GEODETIC SERVICES  
 751 Roosevelt Road, Suite 7-115  
 Glen Ellyn, Illinois 60137  
 (708) 790-9700

STATE OF ILLINOIS)  
 COUNTY OF DUPAGE )  
 MIDWEST SURVEY CONSULTANTS, INC., REGISTERED LAND SURVEYOR CORPORATION NO. 46, HEREBY CERTIFIES THAT WE HAVE SURVEYED THE ABOVE DESCRIBED PROPERTY AND THAT THE PLAT HEREON DRAWN IS A CORRECT REPRESENTATION OF SAID SURVEY.  
 DATED THIS 25th DAY OF JUNE, 1993  
 BY: Robert J. Diehl, President, P.L.S.  
 MIDWEST SURVEY CONSULTANTS, INC.



REVISED 7-7-93 *Diehl*