

This document prepared by and
after recordation should be
returned to:

David Chaiken
111 W. Washington, #823
Chicago, IL 60602



Doc#: 0718322128 Fee: \$118.00
Eugene "Gene" Moore RHSP Fee: \$10.00
Cook County Recorder of Deeds
Date: 07/02/2007 12:25 PM Pg: 1 of 20

This space reser

SEVENTH AMENDMENT TO DECLARATION
OF CONDOMINIUM OWNERSHIP
PURSUANT TO THE CONDOMINIUM PROPERTY ACT
GRAND ON GRAND CONDOMINIUMS

THIS SEVENTH AMENDMENT TO DECLARATION ("Amendment") is made and
entered into by Grand Wells Development, LLC, an Illinois limited liability company,
(hereinafter referred to as "Declarant");

WHEREAS, by that certain Declaration of Condominium Ownership on June 16,
2004, Grand Wells Development, LLC., an Illinois limited liability company, executed
the Declaration of Condominium for the Grand on Grand Condominium and recorded on
June 16, 2004, with the Cook County Recorder of Deeds, as Document Number
0416834048 (the "Declaration"), on December 7, 2004 executed the First Amendment to
the Declaration of Condominium recorded on December 20, 2004 with the Cook County
Recorder of Deeds as Document Number 0435527026 and on January 24, 2005 executed
the Second Amendment to the Declaration of Condominium recorded on January 27,
2005 with the Cook County Recorder of Deeds as Document Number 0502734055 and
on December 13, 2005 executed the Third Amendment to the Declaration of
Condominium recorded on December 16, 2005 and on June 15, 2006 executed the Fourth
Amendment to the Declaration of Condominium recorded on June 16, 2006 with the
Cook County Recorder of Deeds as Document Number 0061673095 on June 19, 2006
executed the Fifth Amendment to the Declaration of Condominium recorded on June 20,
2006 with the Cook County Recorder of Deeds as Document Number 00617110065 to
correct the Fourth Amendment, and on June 26, 2006, executed the Sixth Amendment to
Declaration of Condominium recorded on June 27, 2007, with the Cook County Recorder
of Deeds as Document Number 0617831005, the Declarant submitted certain real estate
legally described on Exhibit A attached hereto and made a part hereof the Condominium
Property Act of the State of Illinois (the "Act"), said Condominium being known as the
Grand On Grand Condominium (the "Condominium");

WHEREAS, the Declarant desires, pursuant to Section 22 of the Declaration and
for the purposes above set forth, hereby declares that the Declaration be and hereby is
amended as follows:

1. All capitalized terms used in this Amendment and not otherwise defined in
this Amendment shall have the meanings ascribed to them in the Declaration.

200 W. GRAND, CHGO, IL
17-09-237-018, 019-1001 & 1237

RECORDING FEE 118.00
DATE 7-2-07 COPIES 6
OK BY [Signature]

2. Exhibit A of the Declaration is hereby corrected per the attached Exhibit A.

3. Exhibit B of the Declaration is hereby amended by deleting it in its entirety and substituting in its place the corrected attached Exhibit B.

4. Exhibit D to the Declaration is hereby amended by inserting page 2 of 22 ! 29 of 29 of the Plat.

5. This Amendment is pursuant to Section 22 to bring the Declaration in compliance with the Act.

IN WITNESS WHEREOF, Grand Wells Development, LLC, has caused its name to be signed to these presents as of this 19 day of June, 2007

Grand Wells Development, LLC

By: 

Mark Sutherland, Manager

STATE OF ILLINOIS)

) SS

COUNTY OF COOK)

I, the undersigned, a Notary Public in and for the County and State aforesaid, DO HEREBY CERTIFY that Mark Sutherland, the Manager of said company, personally known to me to be the same person whose name is subscribed to the foregoing instrument, appeared before me this day in person, and acknowledged that he signed, sealed and delivered the said instrument as his free and voluntary act, for the uses and purposes therein set forth

Given under my hand and notary seal, this 19 day of June, 2007

NOTARY PUBLIC





EXHIBIT A

UNIT NUMBERS 601, 603, 604, 605, 606, 701, 702, 703, 704, 705, 706, 801, 802, 803, 804, 805, 806, 901, 902, 903, 904, 905, 906, 1001, 1002, 1003, 1004, 1005, 1006, 1101, 1102, 1103, 1104, 1105, 1106, 1201, 1202, 1203, 1204, 1205, 1206, 1301, 1302, 1303, 1304, 1305, 1306, 1401, 1402, 1403, 1404, 1405, 1406, 1501, 1502, 1503, 1504, 1505, 1506, 1601, 1602, 1603, 1604, 1605, 1606, 1701, 1702, 1703, 1704, 1705, 1706, 1801, 1802, 1803, 1804, 1805, 1806, 1901, 1903, 1904, 1905, 1906, 2001, 2002, 2003, 2004, 2005, 2006, 2101, 2102, 2103, 2104, 2105, 2106, 2202, 2203, 2301, 2303, 2304, 2401, 2501, 2502, 2601, 2602, 2701, P1, P2, P3, P4, P5, P6, P7, P8, P9, P10, P11, P12, P13, P14, P15, P16, P17, P18, P19, P20, P21, P22, P23, P24, P25, P26, P27, P28, P29, P30, P31, P32, P33, P34, P35, P36, P37, P38, P39, P40 P41, P42, P43, P44, P45, P46, P47, P48, P49, P50, P51, P52, P53, P54, P55, P56, P57, P58, P59, P60, P60, P61, P62, P63, P64, P65, P66, P67, P68, P69, P70, P71, P72, P73, P74, P75, P76, P77, P78, P79, P80, P80, P81, P82, P83, P84, P85, P86, P87, P88, P89, P90, P91, P92, P93, P94, P95, P96, P97, P98, P99, P100, P101, P102, P103, P104, P105, P106, P107, P108, P109, P110, P111, P112, P113, P114, P115, P116, P117, P118, P119, P120, P121, P122, P123, P124, P125, P126, P127, P128, P129, P130, P131, SR1, SR2, SR3, SR4, SR5, SL1, SL2, SL3, SL4, SL5, SL6, SL7, SL8, L9, SL10, SL11, SL12, SL13, SL14, SL15, SL16, SL17, SL18, SL19, SL20, SL21, SL22, SL23, SL24, SL25, SL26 IN THE GRAND ON GRAND CONDOMINIUM AS DELINEATED ON THE SURVEY OF THE FOLLOWING DESCRIBED REAL ESTATE:

LOTS 1, 2, 3, 4, 5 AND THE SOUTH HALF OF LOT 6, IN BLOCK 13 IN NEWBERRY'S ADDITION TO CHICAGO IN SECTION 9, TOWNSHIP 39 NORTH, RANGE 14, EAST OF THE THIRD PRINCIPAL MERIDIAN, EXCEPTING THEREFROM THE FOLLOWING DESCRIBED PARCELS :

(EXCEPTION PARCEL 1) :

THAT PART OF LOTS 1, 2, 3, 4, 5 AND THE SOUTH HALF OF LOT 6, LYING BELOW A HORIZONTAL PLANE OF + 32.72 CITY OF CHICAGO DATUM, AND LYING ABOVE A HORIZONTAL PLANE OF + 14.75 CITY OF CHICAGO DATUM, IN BLOCK 13 IN NEWBERRY'S ADDITION TO CHICAGO IN SECTION 9, TOWNSHIP 39 NORTH, RANGE 14, EAST OF THE THIRD PRINCIPAL MERIDIAN, DESCRIBED AS FOLLOWS : BEGINNING AT A POINT 50.28 FEET WEST AND 3.46 FEET NORTH OF THE SOUTHEAST CORNER OF SAID LOT 1 : THENCE NORTH PARALLEL WITH THE EAST LINE OF SAID LOTS, A DISTANCE OF 16.0 FEET; THENCE NORTHERLY ALONG A CURVED LINE CONVEX SOUTHWESTERLY AND HAVING A RADIUS OF 16.25 FEET, AN ARC DISTANCE OF 8.05 FEET; THENCE NORTH PARALLEL WITH THE EAST LINE OF SAID LOTS, A DISTANCE OF 11.01 FEET; THENCE NORTHWESTERLY ALONG A STRAIGHT LINE, A DISTANCE OF 8.63 FEET TO A POINT, SAID POINT BEING 45.14 FEET NORTH AND 72.09 FEET WEST OF THE SOUTHEAST CORNER OF SAID LOT 1; THENCE SOUTH PARALLEL WITH THE EAST LINE OF SAID LOTS, A DISTANCE OF 1.18 FEET; THENCE WEST PERPENDICULAR TO THE LAST DESCRIBED LINE, A DISTANCE OF 5.96 FEET; THENCE NORTH PARALLEL WITH THE EAST LINE OF SAID LOTS, A DISTANCE OF 1.56 FEET; THENCE WEST PERPENDICULAR TO THE LAST DESCRIBED LINE, A DISTANCE OF 0.48 FEET; THENCE NORTH PARALLEL WITH THE EAST LINE OF SAID LOTS, A DISTANCE OF 5.43 FEET; THENCE WEST PERPENDICULAR TO THE LAST DESCRIBED LINE, A DISTANCE OF 21.05 FEET; THENCE SOUTH PARALLEL WITH THE EAST LINE OF SAID LOTS, A DISTANCE OF 5.89 FEET; THENCE SOUTHEASTERLY ALONG A STRAIGHT LINE, A DISTANCE OF 19.42 FEET TO A POINT, SAID POINT BEING 79.79 FEET WEST AND 26.83 FEET NORTH OF THE SOUTHEAST CORNER OF SAID LOT 1; THENCE SOUTH PARALLEL WITH THE EAST LINE OF SAID LOTS, A DISTANCE OF 2.45 FEET; THENCE EAST PERPENDICULAR TO THE LAST DESCRIBED LINE, A DISTANCE OF 6.64 FEET; THENCE SOUTH PARALLEL WITH THE EAST LINE OF SAID LOTS, A DISTANCE OF 20.92 FEET; THENCE EAST PERPENDICULAR TO THE LAST DESCRIBED LINE, A DISTANCE OF 22.87 FEET TO THE POINT OF BEGINNING, ALL IN COOK COUNTY, ILLINOIS.

(EXCEPTION PARCEL 2) :

THAT PART OF LOTS 1, 2, 3, 4, 5 AND THE SOUTH HALF OF LOT 6, LYING BELOW A HORIZONTAL PLANE OF + 28.70 CITY OF CHICAGO DATUM, AND LYING ABOVE A HORIZONTAL PLANE OF + 14.75 CITY OF CHICAGO DATUM, IN BLOCK 13 IN NEWBERRY'S ADDITION TO CHICAGO IN SECTION 9, TOWNSHIP 39 NORTH, RANGE 14, EAST OF THE THIRD PRINCIPAL MERIDIAN, DESCRIBED AS FOLLOWS : BEGINNING AT A POINT 2.96 FEET SOUTH AND 3.13 FEET WEST OF THE NORTHEAST CORNER OF THE SOUTH HALF OF LOT 6; THENCE SOUTH PARALLEL WITH THE EAST LINE OF SAID LOTS, A DISTANCE OF 36.99 FEET; THENCE WEST PERPENDICULAR TO THE LAST DESCRIBED LINE, A DISTANCE OF 1.46 FEET; THENCE SOUTH PARALLEL TO THE EAST LINE OF SAID LOTS, A DISTANCE OF 2.05 FEET; THENCE WEST

PERPENDICULAR TO THE LAST DESCRIBED LINE, A DISTANCE OF 21.0 FEET; THENCE SOUTH PARALLEL TO THE EAST LINE OF SAID LOTS, A DISTANCE OF 17.32 FEET; THENCE WEST PERPENDICULAR TO THE LAST DESCRIBED LINE, A DISTANCE OF 27.08 FEET; THENCE NORTH PARALLEL WITH THE EAST LINE OF SAID LOTS, A DISTANCE OF 15.51 FEET; THENCE WEST PERPENDICULAR TO THE LAST DESCRIBED LINE, A DISTANCE OF 2.59 FEET; THENCE NORTH PARALLEL TO THE EAST LINE OF SAID LOTS, A DISTANCE OF 4.29 FEET; THENCE WEST PERPENDICULAR TO THE LAST DESCRIBED LINE, A DISTANCE OF 3.58 FEET; THENCE NORTH PARALLEL WITH THE EAST LINE OF SAID LOTS, A DISTANCE OF 12.60 FEET; THENCE EAST PERPENDICULAR TO THE LAST DESCRIBED LINE, A DISTANCE OF 1.76 FEET; THENCE NORTH PARALLEL TO THE EAST LINE OF SAID LOTS, A DISTANCE OF 5.50 FEET; THENCE EAST PERPENDICULAR TO THE LAST DESCRIBED LINE, A DISTANCE OF 1.38 FEET; THENCE NORTH PARALLEL TO THE EAST LINE OF SAID LOTS, A DISTANCE OF 2.49 FEET; THENCE EAST PERPENDICULAR TO THE LAST DESCRIBED LINE, A DISTANCE OF 2.04 FEET; THENCE NORTH PARALLEL WITH THE EAST LINE OF SAID LOTS, A DISTANCE OF 16.97 FEET; THENCE EAST PERPENDICULAR TO THE LAST DESCRIBED LINE, A DISTANCE OF 21.99 FEET; THENCE SOUTH PARALLEL WITH THE EAST LINE OF SAID LOTS, A DISTANCE OF 1.0 FEET; THENCE EAST PERPENDICULAR TO THE LAST DESCRIBED LINE, A DISTANCE OF 2.01 FEET; THENCE NORTH PARALLEL WITH THE EAST LINE OF SAID LOTS, A DISTANCE OF 1.36 FEET; THENCE EAST PERPENDICULAR TO THE LAST DESCRIBED LINE, A DISTANCE OF 24.23 FEET; THENCE SOUTH PARALLEL WITH THE EAST LINE OF SAID LOTS, A DISTANCE OF 1.36 FEET; THENCE EAST PERPENDICULAR TO THE LAST DESCRIBED LINE, A DISTANCE OF 2.30 FEET TO THE POINT OF BEGINNING, ALL IN COOK COUNTY, ILLINOIS.

(EXCEPTION PARCEL 3) :

THAT PART OF LOTS 1, 2, 3, 4, 5 AND THE SOUTH HALF OF LOT 6, LYING BELOW A HORIZONTAL PLANE OF + 33.05 CITY OF CHICAGO DATUM, AND LYING ABOVE A HORIZONTAL PLANE OF + 14.75 CITY OF CHICAGO DATUM, IN BLOCK 13 IN NEWBERRY'S ADDITION TO CHICAGO IN SECTION 9, TOWNSHIP 39 NORTH, RANGE 14, EAST OF THE THIRD PRINCIPAL MERIDIAN, DESCRIBED AS FOLLOWS : BEGINNING AT A POINT 50.18 FEET NORTH AND 1.41 FEET WEST OF THE SOUTHEAST CORNER OF SAID LOT 1; THENCE NORTH PARALLEL WITH THE EAST LINE OF SAID LOTS, A DISTANCE OF 10.29 FEET; THENCE WEST PERPENDICULAR TO THE LAST DESCRIBED LINE, A DISTANCE OF 1.35 FEET; THENCE NORTH PARALLEL WITH THE EAST LINE OF SAID LOTS, A DISTANCE OF 2.0 FEET; THENCE EAST PERPENDICULAR TO THE LAST DESCRIBED LINE, A DISTANCE OF 1.35 FEET; THENCE NORTH PARALLEL WITH THE EAST LINE OF SAID LOTS, A DISTANCE OF 10.30 FEET; THENCE WEST PERPENDICULAR TO THE LAST DESCRIBED LINE, A DISTANCE OF 23.88 FEET; THENCE NORTH PARALLEL WITH THE EAST LINE OF SAID LOTS, A DISTANCE OF 19.54 FEET; THENCE WEST PERPENDICULAR TO THE LAST DESCRIBED LINE, A DISTANCE OF 7.22 FEET; THENCE SOUTH PARALLEL WITH THE EAST LINE OF SAID LOTS, A DISTANCE OF 25.10 FEET; THENCE EAST PERPENDICULAR TO THE LAST DESCRIBED LINE, A DISTANCE OF 0.31 FEET; THENCE SOUTH PARALLEL WITH THE EAST LINE OF SAID LOTS, A DISTANCE OF 23.74 FEET; THENCE EAST PERPENDICULAR TO THE LAST DESCRIBED LINE, A DISTANCE OF 3.27 FEET; THENCE NORTH PARALLEL WITH THE EAST LINE OF SAID LOTS, A DISTANCE OF 1.09 FEET; THENCE EAST PERPENDICULAR TO THE LAST DESCRIBED LINE, A DISTANCE OF 2.50 FEET; THENCE SOUTH PARALLEL WITH THE EAST LINE OF SAID LOTS, A DISTANCE OF 0.38 FEET; THENCE EAST PERPENDICULAR TO THE LAST DESCRIBED LINE, A DISTANCE OF 10.77 FEET; THENCE NORTH PARALLEL WITH THE EAST LINE OF SAID LOTS, A DISTANCE OF 5.10 FEET; THENCE EAST PERPENDICULAR TO THE LAST DESCRIBED LINE, A DISTANCE OF 4.0 FEET; THENCE SOUTH PARALLEL WITH THE EAST LINE OF SAID LOTS, A DISTANCE OF 0.40 FEET; THENCE EAST PERPENDICULAR TO THE LAST DESCRIBED LINE, A DISTANCE OF 8.55 FEET; THENCE NORTH PARALLEL WITH THE EAST LINE OF SAID LOTS, A DISTANCE OF 1.30 FEET; THENCE EAST PERPENDICULAR TO THE LAST DESCRIBED LINE, A DISTANCE OF 1.70 FEET TO THE POINT OF BEGINNING, ALL IN COOK COUNTY, ILLINOIS.

(EXCEPTION PARCEL 4) :

THAT PART OF LOTS 1, 2, 3, 4, 5 AND THE SOUTH HALF OF LOT 6, LYING BELOW A HORIZONTAL PLANE OF +28.70 TO A POINT +33.05 CITY OF CHICAGO DATUM, AND LYING ABOVE A HORIZONTAL PLANE OF + 14.75 CITY OF CHICAGO DATUM, IN BLOCK 13 IN NEWBERRY'S ADDITION TO CHICAGO IN SECTION 9, TOWNSHIP 39 NORTH, RANGE 14, EAST OF THE THIRD PRINCIPAL MERIDIAN, DESCRIBED AS FOLLOWS : BEGINNING AT A POINT 42.0 FEET SOUTH AND 1.36 FEET WEST OF THE NORTHEAST CORNER OF THE SOUTH HALF OF SAID LOT 6, SAID POINT HAVING AN UPPER ELEVATION OF +28.70 CITY OF CHICAGO DATUM; THENCE SOUTH PARALLEL WITH THE EAST LINE OF SAID LOTS, A DISTANCE OF 10.30 FEET; THENCE WEST PERPENDICULAR TO THE LAST DESCRIBED LINE, A DISTANCE OF 1.30 FEET; THENCE SOUTH PARALLEL WITH THE EAST LINE OF SAID LOTS, A DISTANCE OF 1.98 FEET; THENCE EAST PERPENDICULAR TO THE LAST DESCRIBED LINE, A DISTANCE OF 1.33 FEET; THENCE SOUTH PARALLEL WITH THE EAST LINE OF SAID LOTS, A DISTANCE OF 10.31 FEET; THENCE WEST PERPENDICULAR TO THE LAST DESCRIBED LINE, A DISTANCE OF 2.03 FEET; THENCE SOUTH PARALLEL WITH THE EAST LINE OF

SAID LOTS, A DISTANCE OF 2.03 FEET; THENCE EAST PERPENDICULAR TO THE LAST DESCRIBED LINE, A DISTANCE OF 2.02 FEET; THENCE SOUTH PARALLEL WITH THE EAST LINE OF SAID LOTS, A DISTANCE OF 10.24 FEET; THENCE WEST PERPENDICULAR TO THE LAST DESCRIBED LINE, A DISTANCE OF 1.28 FEET; THENCE SOUTH PARALLEL WITH THE EAST LINE OF SAID LOTS, A DISTANCE OF 2.0 FEET TO A POINT, SAID POINT HAVING AN UPPER ELEVATION OF +33.05 CITY OF CHICAGO DATUM; THENCE WEST PERPENDICULAR TO THE LAST DESCRIBED LINE HAVING AN UPPER ELEVATION OF +33.05 CITY OF CHICAGO DATUM, A DISTANCE OF 22.52 FEET; THENCE NORTH PARALLEL WITH THE EAST LINE OF SAID LOTS, A DISTANCE OF 36.86 FEET TO A POINT, SAID POINT HAVING AN UPPER ELEVATION OF +28.70 CITY OF CHICAGO DATUM; THENCE EAST PERPENDICULAR TO THE LAST DESCRIBED LINE HAVING AN UPPER ELEVATION OF +28.70 CITY OF CHICAGO DATUM, A DISTANCE OF 23.78 FEET TO THE POINT OF BEGINNING, ALL IN COOK COUNTY, ILLINOIS.

(EXCEPTION PARCEL 5) :

THAT PART OF LOTS 1, 2, 3, 4, 5 AND THE SOUTH HALF OF LOT 6, LYING BELOW A HORIZONTAL PLANE OF + 32.72 CITY OF CHICAGO DATUM, AND LYING ABOVE A HORIZONTAL PLANE OF + 14.75 CITY OF CHICAGO DATUM, IN BLOCK 13 IN NEWBERRY'S ADDITION TO CHICAGO IN SECTION 9, TOWNSHIP 39 NORTH, RANGE 14, EAST OF THE THIRD PRINCIPAL MERIDIAN, DESCRIBED AS FOLLOWS : BEGINNING AT A POINT 29.32 FEET SOUTH AND 37.89 FEET EAST OF THE NORTHWEST CORNER OF THE SOUTH HALF OF SAID LOT 6; THENCE SOUTH PARALLEL WITH THE EAST LINE OF SAID LOTS, A DISTANCE OF 12.06 FEET; THENCE WEST PERPENDICULAR TO THE LAST DESCRIBED LINE, A DISTANCE OF 8.89 FEET; THENCE NORTH PARALLEL WITH THE EAST LINE OF SAID LOTS, A DISTANCE OF 2.06 FEET; THENCE WEST PERPENDICULAR TO THE LAST DESCRIBED LINE, A DISTANCE OF 0.62 FEET; THENCE NORTH PARALLEL WITH THE EAST LINE OF SAID LOTS, A DISTANCE OF 10.02 FEET; THENCE EAST PERPENDICULAR TO THE LAST DESCRIBED LINE, A DISTANCE OF 9.53 FEET, TO THE POINT OF BEGINNING, ALL IN COOK COUNTY, ILLINOIS.

Parcel 6

THAT PART OF LOTS 1, 2, 3, 4, 5 AND THE SOUTH HALF OF LOT 6, LYING ABOVE A HORIZONTAL PLANE OF +262.98 CITY OF CHICAGO DATUM AND LYING BELOW A HORIZONTAL PLANE OF +274.47 CITY OF CHICAGO DATUM, IN BLOCK 13 IN NEWBERRY'S ADDITION TO CHICAGO IN SECTION 9, TOWNSHIP 39 NORTH, RANGE 14, EAST OF THE THIRD PRINCIPAL MERIDIAN, DESCRIBED AS FOLLOWS; BEGINNING AT THE SOUTHWEST CORNER OF SAID LOT 1; THENCE NORTH ALONG THE WEST LINE OF SAID LOTS, A DISTANCE OF 87.08 FEET; THENCE EAST PARALLEL WITH THE SOUTH LINE OF SAID LOT 1, A DISTANCE OF 19.85 FEET; THENCE NORTH PARALLEL WITH THE WEST LINE OF SAID LOTS, A DISTANCE OF 2.04 FEET; THENCE EAST PARALLEL WITH THE SOUTH LINE OF SAID LOT 1, A DISTANCE OF 8.12 FEET; THENCE SOUTH PARALLEL WITH THE WEST LINE OF SAID LOTS, A DISTANCE OF 7.0 FEET; THENCE EAST PARALLEL WITH THE SOUTH LINE OF SAID LOT 1, A DISTANCE OF 4.95 FEET; THENCE NORTH PARALLEL WITH THE WEST LINE OF SAID LOTS, A DISTANCE OF 7.0 FEET; THENCE EAST PARALLEL WITH THE SOUTH LINE OF SAID LOT 1, A DISTANCE OF 5.43 FEET; THENCE SOUTH PARALLEL WITH THE WEST LINE OF SAID LOTS, A DISTANCE OF 7.0 FEET; THENCE EAST PARALLEL WITH THE SOUTH LINE OF SAID LOT 1, A DISTANCE OF 7.04 FEET; THENCE NORTH PARALLEL WITH THE WEST LINE OF SAID LOTS, A DISTANCE OF 2.77 FEET; THENCE EAST PARALLEL WITH THE SOUTH LINE OF SAID LOT 1, A DISTANCE OF 7.04 FEET; THENCE SOUTH PARALLEL WITH THE WEST LINE OF SAID LOTS, A DISTANCE OF 2.77 FEET; THENCE EAST PARALLEL WITH THE SOUTH LINE OF SAID LOT 1, A DISTANCE OF 6.21 FEET; THENCE NORTH PARALLEL WITH THE WEST LINE OF SAID LOTS, A DISTANCE OF 8.59 FEET; THENCE EAST PARALLEL WITH THE SOUTH LINE OF SAID LOT 1, A DISTANCE OF 17.68 FEET; THENCE SOUTH PARALLEL WITH THE WEST LINE OF SAID LOTS, A DISTANCE OF 14.96 FEET; THENCE EAST PARALLEL WITH THE SOUTH LINE OF SAID LOT 1, A DISTANCE OF 4.22 FEET; THENCE NORTH PARALLEL WITH THE WEST LINE OF SAID LOTS, A DISTANCE OF 4.93 FEET; THENCE EAST PARALLEL WITH THE SOUTH LINE OF SAID LOT 1, A DISTANCE OF 29.74 FEET TO A POINT ON THE EAST LINE OF SAID LOTS, SAID POINT BEING 80.68 FEET NORTH OF THE SOUTHEAST CORNER OF SAID LOT 1; THENCE SOUTH ALONG THE EAST LINE OF SAID LOTS, A DISTANCE OF 80.68 FEET TO THE SOUTHEAST CORNER OF SAID LOT 1; THENCE WEST ALONG THE SOUTH LINE OF SAID LOT 1, A DISTANCE OF 110.28 FEET TO THE POINT OF BEGINNING, ALL IN COOK COUNTY, ILLINOIS.

PIN: 17-09-237-011; 17-09-237-012; 17-09-237-013; 17-09-237-014

ADDRESS OF PROPERTY: 200 W. GRAND, CHICAGO, ILLINOIS 60610

GRAND ON GRAND CONDOMINIUM (5th ADD-ON)

PIN:

ADDRESS OF PROPERTY: 200 W. GRAND, CHICAGO, ILLINOIS 60610

EXHIBIT B

PERCENTAGE OF OWNERSHIP INTEREST
IN THE COMMON ELEMENTS

UNIT OWNERSHIP INTEREST IN THE
COMMON ELEMENTS

UNIT

601	1.05940%
701	0.96959%
801	0.97857%
901	0.98755%
1001	0.99653%
1101	1.00551%
1201	1.01449%
1301	1.02347%
1401	1.03245%
1501	1.04143%
1601	0.86184%
1701	1.05939%
1801	1.06837%
1901	1.98786%
2001	1.08633%
	0.00000%
702	0.51165%
802	0.51703%
902	0.52242%
1002	0.52781%
1102	0.53320%
1202	0.53858%
1302	0.54397%
1402	0.54936%
1502	0.55475%
1602	0.56013%
1702	0.56552%
1802	0.57091%
	0.00000%

2002	0.58168%
603	0.87980%
703	0.67327%
803	0.68225%
903	0.69123%
1003	0.70021%
1103	0.70919%
1203	0.71817%
1303	0.72715%
1403	0.73613%
1503	0.75409%
1603	0.76127%
1703	0.76846%
1803	0.77564%
1903	0.45059%
2003	0.79001%
604	0.84388%
704	0.67866%
804	0.68585%
904	0.69303%
1004	0.70021%
1104	0.70740%
1204	0.71458%
1304	0.72176%
1404	0.72895%
1504	0.73613%
1604	0.74331%
1704	0.75050%
1804	0.75768%
1904	0.69303%
2004	0.77205%
605	0.55654%
705	0.49189%
805	0.49728%
905	0.50267%
1005	0.50805%
1105	0.51344%
1205	0.51883%
1305	0.52422%

1405	0.52960%
1505	0.53499%
1605	0.54038%
1705	0.54577%
1805	0.55115%
1905	0.50267%
2005	0.56193%
606	0.93368%
706	0.78103%
806	0.79001%
906	0.79899%
1006	0.80797%
1106	0.81694%
1206	0.82592%
1306	0.83490%
1406	0.84388%
1506	0.85286%
1606	1.05041%
1706	0.87082%
1806	0.87980%
1906	0.88878%
2006	0.89776%
2101	1.09531%
2102	0.51165%
2103	0.79899%
2104	0.77923%
2105	0.56732%
2106	0.90674%
	0.00000%
2202	0.47752%
2203	0.89776%
	0.00000%
2301	2.32548%
	0.00000%
2303	0.82592%
2304	1.41856%
2401	2.69543%
	0.00000%
2501	1.65203%

2502	1.54427%
2601	2.29854%
2602	1.72392%
2701	3.37607%
	0.00000%
P1	0.07812%
P2	0.07812%
P3	0.07812%
P4	0.07812%
P5	0.07812%
P6	0.07812%
P7	0.07812%
P8	0.07812%
P9	0.07812%
P10	0.07812%
P11	0.07812%
P12	0.07812%
P13	0.07812%
P14	0.07812%
P15	0.07812%
P16	0.07812%
P17	0.07812%
P18	0.07812%
P19	0.07812%
P20	0.07812%
P21	0.07812%
P22	0.07812%
P23	0.07812%
P24	0.07812%
P25	0.13451%
P26	0.07812%
P27	0.06088%
P28	0.07812%
P29	0.07812%
P30	0.11655%
P31	0.11655%
P32	0.11655%
P33	0.07453%
P34	0.07453%

P35	0.07453%
P36	0.07453%
P37	0.07453%
P38	0.07453%
P39	0.07453%
P40	0.07453%
P41	0.07453%
P42	0.07453%
P43	0.07453%
P44	0.07453%
P45	0.07453%
P46	0.07453%
P47	0.07453%
P48	0.07453%
P49	0.07453%
P50	0.07453%
P51	0.07453%
P52	0.07453%
P53	0.07453%
P54	0.07453%
P55	0.07453%
P56	0.07453%
P57	0.13272%
P58	0.07453%
P59	0.05908%
P60	0.07453%
P61	0.07453%
P62	0.11476%
P63	0.11476%
P64	0.11476%
P65	0.07094%
P66	0.07094%
P67	0.07094%
P68	0.07094%
P69	0.07094%
P70	0.07094%
P71	0.07094%
P72	0.07094%
P73	0.07094%

P74	0.07094%
P75	0.07094%
P76	0.07094%
P77	0.07094%
P78	0.07094%
P79	0.07094%
P80	0.07094%
P81	0.07094%
P82	0.07094%
P83	0.07094%
P84	0.07094%
P85	0.07094%
P86	0.07094%
P87	0.07094%
P88	0.07094%
P89	0.13092%
P90	0.07094%
P91	0.05729%
P92	0.07094%
P93	0.07094%
P94	0.11296%
P95	0.11296%
P96	0.11296%
P97	0.06824%
P98	0.06824%
P99	0.06824%
P100	0.06824%
P101	0.06824%
P102	0.06824%
P103	0.06824%
P104	0.06824%
P105	0.06824%
P106	0.06824%
P107	0.06824%
P108	0.06824%
P109	0.06824%
P110	0.06824%
P111	0.06824%
P112	0.06824%

P113	0.06824%
P114	0.06824%
P115	0.06824%
P116	0.06824%
P117	0.06824%
P118	0.06824%
P119	0.06824%
P120	0.06824%
P121	0.06824%
P122	0.06824%
P123	0.06824%
P124	0.06824%
P125	0.06824%
P126	0.05549%
P127	0.06824%
P128	0.06824%
P129	0.11116%
P130	0.11116%
P131	0.11116%
SR1	0.01796%
SR2	0.01796%
SR3	0.01796%
SR4	0.01796%
SR5	0.03592%
SL1	0.00718%
SL2	0.00718%
SL3	0.00359%
SL4	0.00359%
SL5	0.00359%
SL6	0.00359%
SL7	0.00359%
SL8	0.00359%
SL9	0.00359%
SL10	0.00359%
SL11	0.00359%
SL12	0.00359%
SL13	0.00359%
SL14	0.00359%
SL15	0.00359%

SL16	0.00359%
SL17	0.00359%
SL18	0.00359%
SL19	0.00359%
SL20	0.00359%
SL21	0.00359%
SL22	0.00359%
SL23	0.00359%
SL24	0.00359%
SL25	0.00359%
SL26	0.00359%
	100.0000%

EXHIBIT D

CORRECTED PAGE ____ AND ____ OF THE PLAT

(attached hereto)

LOTS 1, 2, 3, 4, 5 AND THE SOUTH HALF OF LOT 6, LYING ABOVE A HORIZONTAL PLANE OF +209.58 CITY OF CHICAGO DATUM, LYING BELOW A HORIZONTAL PLANE OF +220.41 CITY OF CHICAGO DATUM, AND ALSO LYING ABOVE A HORIZONTAL PLANE OF +274.47 CITY OF CHICAGO DATUM AND LYING BELOW A HORIZONTAL PLANE OF +284.30 CITY OF CHICAGO DATUM, IN BLOCK 13 IN NEWBERRY'S ADDITION TO CHICAGO IN SECTION 9, TOWNSHIP 39 NORTH, RANGE 14, EAST OF THE THIRD PRINCIPAL MERIDIAN, EXCEPTING THEREFROM THE FOLLOWING DESCRIBED PARCELS :

(EXCEPTION PARCEL 1) :

THAT PART OF LOTS 1, 2, 3, 4, 5 AND THE SOUTH HALF OF LOT 6, LYING BELOW A HORIZONTAL PLANE OF + 32.72 CITY OF CHICAGO DATUM, AND LYING ABOVE A HORIZONTAL PLANE OF + 14.75 CITY OF CHICAGO DATUM, IN BLOCK 13 IN NEWBERRY'S ADDITION TO CHICAGO IN SECTION 9, TOWNSHIP 39 NORTH, RANGE 14, EAST OF THE THIRD PRINCIPAL MERIDIAN, DESCRIBED AS FOLLOWS : BEGINNING AT A POINT 50.28 FEET WEST AND 3.46 FEET NORTH OF THE SOUTHEAST CORNER OF SAID LOT 1 : THENCE NORTH PARALLEL WITH THE EAST LINE OF SAID LOTS, A DISTANCE OF 16.0 FEET; THENCE NORTHERLY ALONG A CURVED LINE CONVEX SOUTHWESTERLY AND HAVING A RADIUS OF 16.25 FEET, AN ARC DISTANCE OF 8.05 FEET; THENCE NORTH PARALLEL WITH THE EAST LINE OF SAID LOTS, A DISTANCE OF 11.01 FEET; THENCE NORTHWESTERLY ALONG A STRAIGHT LINE, A DISTANCE OF 8.63 FEET TO A POINT, SAID POINT BEING 45.14 FEET NORTH AND 72.09 FEET WEST OF THE SOUTHEAST CORNER OF SAID LOT 1; THENCE SOUTH PARALLEL WITH THE EAST LINE OF SAID LOTS, A DISTANCE OF 1.18 FEET; THENCE WEST PERPENDICULAR TO THE LAST DESCRIBED LINE, A DISTANCE OF 5.96 FEET; THENCE NORTH PARALLEL WITH THE EAST LINE OF SAID LOTS, A DISTANCE OF 1.56 FEET; THENCE WEST PERPENDICULAR TO THE LAST DESCRIBED LINE, A DISTANCE OF 0.48 FEET; THENCE NORTH PARALLEL WITH THE EAST LINE OF SAID LOTS, A DISTANCE OF 5.43 FEET; THENCE WEST PERPENDICULAR TO THE LAST DESCRIBED LINE, A DISTANCE OF 21.05 FEET; THENCE SOUTH PARALLEL WITH THE EAST LINE OF SAID LOTS, A DISTANCE OF 5.89 FEET; THENCE SOUTHEASTERLY ALONG A STRAIGHT LINE, A DISTANCE OF 19.42 FEET TO A POINT, SAID POINT BEING 79.79 FEET WEST AND 26.83 FEET NORTH OF THE SOUTHEAST CORNER OF SAID LOT 1; THENCE SOUTH PARALLEL WITH THE EAST LINE OF SAID LOTS, A DISTANCE OF 2.45 FEET; THENCE EAST PERPENDICULAR TO THE LAST DESCRIBED LINE, A DISTANCE OF 6.64 FEET; THENCE SOUTH PARALLEL WITH THE EAST LINE OF SAID LOTS, A DISTANCE OF 20.92 FEET; THENCE EAST PERPENDICULAR TO THE LAST DESCRIBED LINE, A DISTANCE OF 22.87 FEET TO THE POINT OF BEGINNING, ALL IN COOK COUNTY, ILLINOIS.

(EXCEPTION PARCEL 2) :

THAT PART OF LOTS 1, 2, 3, 4, 5 AND THE SOUTH HALF OF LOT 6, LYING BELOW A HORIZONTAL PLANE OF + 28.70 CITY OF CHICAGO DATUM, AND LYING ABOVE A HORIZONTAL PLANE OF + 14.75 CITY OF CHICAGO DATUM, IN BLOCK 13 IN NEWBERRY'S ADDITION TO CHICAGO IN SECTION 9, TOWNSHIP 39 NORTH, RANGE 14, EAST OF THE THIRD PRINCIPAL MERIDIAN, DESCRIBED AS FOLLOWS : BEGINNING AT A POINT 2.96 FEET SOUTH AND 3.13 FEET WEST OF THE NORTHEAST CORNER OF THE SOUTH HALF OF LOT 6; THENCE SOUTH PARALLEL WITH THE EAST LINE OF SAID LOTS, A DISTANCE OF 36.99 FEET; THENCE WEST PERPENDICULAR TO THE LAST DESCRIBED LINE, A DISTANCE OF 1.46 FEET; THENCE SOUTH PARALLEL TO THE EAST LINE OF SAID LOTS, A DISTANCE OF 2.05 FEET; THENCE WEST PERPENDICULAR TO THE LAST DESCRIBED LINE, A DISTANCE OF 21.0 FEET; THENCE SOUTH PARALLEL TO THE EAST LINE OF SAID LOTS, A DISTANCE OF 17.32 FEET; THENCE WEST PERPENDICULAR TO THE LAST DESCRIBED LINE, A DISTANCE OF 27.08 FEET; THENCE NORTH PARALLEL WITH THE EAST LINE OF SAID LOTS, A DISTANCE OF 15.51 FEET; THENCE WEST PERPENDICULAR TO THE LAST DESCRIBED LINE, A DISTANCE OF 2.59 FEET; THENCE NORTH PARALLEL TO THE EAST LINE OF SAID LOTS, A DISTANCE OF 4.29 FEET; THENCE WEST PERPENDICULAR TO THE LAST DESCRIBED LINE, A DISTANCE OF 3.58 FEET; THENCE NORTH PARALLEL WITH THE EAST LINE OF SAID LOTS, A DISTANCE OF 12.60 FEET; THENCE EAST PERPENDICULAR TO THE LAST DESCRIBED LINE, A DISTANCE OF 1.76 FEET; THENCE NORTH PARALLEL TO THE EAST LINE OF SAID LOTS, A DISTANCE OF 5.50 FEET; THENCE EAST PERPENDICULAR TO THE LAST DESCRIBED LINE, A DISTANCE OF 1.38 FEET; THENCE NORTH PARALLEL TO THE EAST LINE OF SAID LOTS, A DISTANCE OF 2.49 FEET; THENCE EAST PERPENDICULAR TO THE LAST DESCRIBED LINE, A DISTANCE OF 2.04 FEET; THENCE NORTH PARALLEL WITH THE EAST LINE OF SAID LOTS, A DISTANCE OF 16.97 FEET; THENCE EAST PERPENDICULAR TO THE LAST DESCRIBED LINE, A DISTANCE OF 21.99 FEET; THENCE SOUTH PARALLEL WITH THE EAST LINE OF SAID LOTS, A DISTANCE OF 1.0 FEET; THENCE EAST PERPENDICULAR TO THE LAST DESCRIBED LINE, A DISTANCE OF 2.01 FEET; THENCE NORTH PARALLEL WITH THE EAST LINE OF SAID LOTS, A DISTANCE OF 1.36 FEET; THENCE EAST PERPENDICULAR TO THE LAST DESCRIBED LINE, A DISTANCE OF 24.23 FEET; THENCE SOUTH PARALLEL WITH THE EAST LINE OF SAID LOTS, A DISTANCE OF 1.36 FEET; THENCE EAST PERPENDICULAR TO THE LAST DESCRIBED LINE, A DISTANCE OF 2.30 FEET TO THE POINT OF BEGINNING, ALL IN COOK COUNTY, ILLINOIS.

(EXCEPTION PARCEL 3) :

THAT PART OF LOTS 1, 2, 3, 4, 5 AND THE SOUTH HALF OF LOT 6, LYING BELOW A HORIZONTAL PLANE OF + 33.05 CITY OF CHICAGO DATUM, AND LYING ABOVE A HORIZONTAL PLANE OF + 14.75 CITY OF CHICAGO DATUM, IN BLOCK 13 IN NEWBERRY'S ADDITION TO CHICAGO IN SECTION 9, TOWNSHIP 39 NORTH, RANGE 14, EAST OF THE THIRD PRINCIPAL MERIDIAN, DESCRIBED AS FOLLOWS : BEGINNING AT A POINT 50.18 FEET NORTH AND 1.41 FEET WEST OF THE SOUTHEAST CORNER OF SAID LOT 1; THENCE NORTH PARALLEL WITH THE EAST LINE OF SAID LOTS, A DISTANCE OF 10.29 FEET; THENCE WEST PERPENDICULAR TO THE LAST DESCRIBED LINE, A DISTANCE OF 1.35 FEET; THENCE NORTH PARALLEL WITH THE EAST LINE OF SAID LOTS, A DISTANCE OF 2.0 FEET; THENCE EAST PERPENDICULAR TO THE LAST DESCRIBED LINE, A DISTANCE OF 1.35 FEET; THENCE NORTH PARALLEL WITH THE EAST LINE OF SAID LOTS, A DISTANCE OF 10.30 FEET; THENCE WEST PERPENDICULAR TO THE LAST DESCRIBED LINE, A DISTANCE OF 23.88 FEET; THENCE NORTH PARALLEL WITH THE EAST LINE OF SAID LOTS, A DISTANCE OF 19.54 FEET; THENCE WEST PERPENDICULAR TO THE LAST DESCRIBED LINE, A DISTANCE OF 7.22 FEET; THENCE SOUTH PARALLEL WITH THE EAST LINE OF SAID LOTS, A DISTANCE OF 25.10 FEET; THENCE EAST PERPENDICULAR TO THE LAST DESCRIBED LINE, A DISTANCE OF 0.31 FEET; THENCE SOUTH PARALLEL WITH THE EAST LINE OF SAID LOTS, A DISTANCE OF 23.74 FEET; THENCE EAST PERPENDICULAR TO THE LAST DESCRIBED LINE, A DISTANCE OF 3.27 FEET; THENCE NORTH PARALLEL WITH THE EAST LINE OF SAID LOTS, A DISTANCE OF 1.09 FEET; THENCE EAST PERPENDICULAR TO THE LAST DESCRIBED LINE, A DISTANCE OF 2.50 FEET; THENCE SOUTH PARALLEL WITH THE EAST LINE OF SAID LOTS, A DISTANCE OF 0.38 FEET; THENCE EAST PERPENDICULAR TO THE LAST DESCRIBED LINE, A DISTANCE OF 10.77 FEET; THENCE NORTH PARALLEL WITH THE EAST LINE OF SAID LOTS, A DISTANCE OF 5.10 FEET; THENCE EAST PERPENDICULAR TO THE LAST DESCRIBED LINE, A DISTANCE OF 4.0 FEET; THENCE SOUTH PARALLEL WITH THE EAST LINE OF SAID LOTS, A DISTANCE OF 0.40 FEET; THENCE EAST PERPENDICULAR TO THE LAST DESCRIBED LINE, A DISTANCE OF 8.55 FEET; THENCE NORTH PARALLEL WITH THE EAST LINE OF SAID LOTS, A DISTANCE OF 1.30 FEET; THENCE EAST PERPENDICULAR TO THE LAST DESCRIBED LINE, A DISTANCE OF 1.70 FEET TO THE POINT OF BEGINNING, ALL IN COOK COUNTY, ILLINOIS.

(EXCEPTION PARCEL 4) :

THAT PART OF LOTS 1, 2, 3, 4, 5 AND THE SOUTH HALF OF LOT 6, LYING BELOW A HORIZONTAL PLANE OF +28.70 TO A POINT +33.05 CITY OF CHICAGO DATUM, AND LYING ABOVE A HORIZONTAL PLANE OF + 14.75 CITY OF CHICAGO DATUM, IN BLOCK 13 IN NEWBERRY'S ADDITION TO CHICAGO IN SECTION 9, TOWNSHIP 39 NORTH, RANGE 14, EAST OF THE THIRD PRINCIPAL MERIDIAN, DESCRIBED AS FOLLOWS : BEGINNING AT A POINT 42.0 FEET SOUTH AND 1.36 FEET WEST OF THE NORTHEAST CORNER OF THE SOUTH HALF OF SAID LOT 6, SAID POINT HAVING AN UPPER ELEVATION OF +28.70 CITY OF CHICAGO DATUM; THENCE SOUTH PARALLEL WITH THE EAST LINE OF SAID LOTS, A DISTANCE OF 10.30 FEET; THENCE WEST PERPENDICULAR TO THE LAST DESCRIBED LINE, A DISTANCE OF 1.30 FEET; THENCE SOUTH PARALLEL WITH THE EAST LINE OF SAID LOTS, A DISTANCE OF 1.98 FEET; THENCE EAST PERPENDICULAR TO THE LAST DESCRIBED LINE, A DISTANCE OF 1.33 FEET; THENCE SOUTH PARALLEL WITH THE EAST LINE OF SAID LOTS, A DISTANCE OF 10.31 FEET; THENCE WEST PERPENDICULAR TO THE LAST DESCRIBED LINE, A DISTANCE OF 2.03 FEET; THENCE SOUTH PARALLEL WITH THE EAST LINE OF SAID LOTS, A DISTANCE OF 2.03 FEET; THENCE EAST PERPENDICULAR TO THE LAST DESCRIBED LINE, A DISTANCE OF 2.02 FEET; THENCE SOUTH PARALLEL WITH THE EAST LINE OF SAID LOTS, A DISTANCE OF 10.24 FEET; THENCE WEST PERPENDICULAR TO THE LAST DESCRIBED LINE, A DISTANCE OF 1.28 FEET; THENCE SOUTH PARALLEL WITH THE EAST LINE OF SAID LOTS, A DISTANCE OF 2.0 FEET TO A POINT, SAID POINT HAVING AN UPPER ELEVATION OF +33.05 CITY OF CHICAGO DATUM; THENCE WEST PERPENDICULAR TO THE LAST DESCRIBED LINE HAVING AN UPPER ELEVATION OF +33.05 CITY OF CHICAGO DATUM, A DISTANCE OF 22.52 FEET; THENCE NORTH PARALLEL WITH THE EAST LINE OF SAID LOTS, A DISTANCE OF 36.86 FEET TO A POINT, SAID POINT HAVING AN UPPER ELEVATION OF +28.70 CITY OF CHICAGO DATUM; THENCE EAST PERPENDICULAR TO THE LAST DESCRIBED LINE HAVING AN UPPER ELEVATION OF +28.70 CITY OF CHICAGO DATUM, A DISTANCE OF 23.78 FEET TO THE POINT OF BEGINNING, ALL IN COOK COUNTY, ILLINOIS.

(EXCEPTION PARCEL 5) :

THAT PART OF LOTS 1, 2, 3, 4, 5 AND THE SOUTH HALF OF LOT 6, LYING BELOW A HORIZONTAL PLANE OF + 32.72 CITY OF CHICAGO DATUM, AND LYING ABOVE A HORIZONTAL PLANE OF + 14.75 CITY OF CHICAGO DATUM, IN BLOCK 13 IN NEWBERRY'S ADDITION TO CHICAGO IN SECTION 9, TOWNSHIP 39 NORTH, RANGE 14, EAST OF THE THIRD PRINCIPAL MERIDIAN, DESCRIBED AS FOLLOWS : BEGINNING AT A POINT 29.32 FEET SOUTH AND 37.89 FEET EAST OF THE NORTHWEST CORNER OF THE SOUTH HALF OF SAID LOT 6; THENCE SOUTH PARALLEL WITH THE EAST LINE OF SAID LOTS, A DISTANCE OF 12.06 FEET; THENCE WEST PERPENDICULAR TO THE LAST DESCRIBED LINE, A DISTANCE OF 8.89 FEET; THENCE NORTH PARALLEL WITH THE EAST LINE OF SAID LOTS, A DISTANCE OF 2.06 FEET; THENCE WEST

PERPENDICULAR TO THE LAST DESCRIBED LINE, A DISTANCE OF 0.62 FEET; THENCE NORTH PARALLEL WITH THE EAST LINE OF SAID LOTS, A DISTANCE OF 10.02 FEET; THENCE EAST PERPENDICULAR TO THE LAST DESCRIBED LINE, A DISTANCE OF 9.53 FEET, TO THE POINT OF BEGINNING, ALL IN COOK COUNTY, ILLINOIS.

THAT PART OF LOTS 1, 2, 3, 4, 5 AND THE SOUTH HALF OF LOT 6, LYING ABOVE A HORIZONTAL PLANE OF +262.98 CITY OF CHICAGO DATUM AND LYING BELOW A HORIZONTAL PLANE OF +274.47 CITY OF CHICAGO DATUM, IN BLOCK 13 IN NEWBERRY'S ADDITION TO CHICAGO IN SECTION 9, TOWNSHIP 39 NORTH, RANGE 14, EAST OF THE THIRD PRINCIPAL MERIDIAN, DESCRIBED AS FOLLOWS; BEGINNING AT THE SOUTHWEST CORNER OF SAID LOT 1; THENCE NORTH ALONG THE WEST LINE OF SAID LOTS, A DISTANCE OF 87.08 FEET; THENCE EAST PARALLEL WITH THE SOUTH LINE OF SAID LOT 1, A DISTANCE OF 19.85 FEET; THENCE NORTH PARALLEL WITH THE WEST LINE OF SAID LOTS, A DISTANCE OF 2.04 FEET; THENCE EAST PARALLEL WITH THE SOUTH LINE OF SAID LOT 1, A DISTANCE OF 8.12 FEET; THENCE SOUTH PARALLEL WITH THE WEST LINE OF SAID LOTS, A DISTANCE OF 7.0 FEET; THENCE EAST PARALLEL WITH THE SOUTH LINE OF SAID LOT 1, A DISTANCE OF 4.95 FEET; THENCE NORTH PARALLEL WITH THE WEST LINE OF SAID LOTS, A DISTANCE OF 7.0 FEET; THENCE EAST PARALLEL WITH THE SOUTH LINE OF SAID LOT 1, A DISTANCE OF 5.43 FEET; THENCE SOUTH PARALLEL WITH THE WEST LINE OF SAID LOTS, A DISTANCE OF 7.0 FEET; THENCE EAST PARALLEL WITH THE SOUTH LINE OF SAID LOT 1, A DISTANCE OF 7.04 FEET; THENCE NORTH PARALLEL WITH THE WEST LINE OF SAID LOTS, A DISTANCE OF 2.77 FEET; THENCE EAST PARALLEL WITH THE SOUTH LINE OF SAID LOT 1, A DISTANCE OF 7.04 FEET; THENCE SOUTH PARALLEL WITH THE WEST LINE OF SAID LOTS, A DISTANCE OF 2.77 FEET; THENCE EAST PARALLEL WITH THE SOUTH LINE OF SAID LOT 1, A DISTANCE OF 6.21 FEET; THENCE NORTH PARALLEL WITH THE WEST LINE OF SAID LOTS, A DISTANCE OF 8.59 FEET; THENCE EAST PARALLEL WITH THE SOUTH LINE OF SAID LOT 1, A DISTANCE OF 17.68 FEET; THENCE SOUTH PARALLEL WITH THE WEST LINE OF SAID LOTS, A DISTANCE OF 14.96 FEET; THENCE EAST PARALLEL WITH THE SOUTH LINE OF SAID LOT 1, A DISTANCE OF 4.22 FEET; THENCE NORTH PARALLEL WITH THE WEST LINE OF SAID LOTS, A DISTANCE OF 4.93 FEET; THENCE EAST PARALLEL WITH THE SOUTH LINE OF SAID LOT 1, A DISTANCE OF 29.74 FEET TO A POINT ON THE EAST LINE OF SAID LOTS, SAID POINT BEING 80.68 FEET NORTH OF THE SOUTHEAST CORNER OF SAID LOT 1; THENCE SOUTH ALONG THE EAST LINE OF SAID LOTS, A DISTANCE OF 80.68 FEET TO THE SOUTHEAST CORNER OF SAID LOT 1; THENCE WEST ALONG THE SOUTH LINE OF SAID LOT 1, A DISTANCE OF 110.28 FEET TO THE POINT OF BEGINNING, ALL IN COOK COUNTY, ILLINOIS.

ORDER NO.
06-0894

Doc#: 0718322128 Fee: \$118.00
Eugene "Gene" Moore RHSP Fee: \$10.00
Cook County Recorder of Deeds
Date: 07/02/2007 12:26 PM Pg: 1 of 20

Jens K. Doe
Professional Land Surveyors, P.C.

2 EXHIBITS

PLAT OF SURVEY

FOR PLAT OF SURVEY SEE PAGE 1 OF 22

GRAND ON GRAND CONDOMINIUM

**DOCUMENT
WITH THIS EXHIBIT**

PARCEL 1 : (1st through 20th Floors)

LOTS 2, 3, 4, 5 AND THE SOUTH HALF OF LOT 6, LYING BELOW A HORIZONTAL PLANE OF 209.58 CITY OF CHICAGO DATUM, IN BLACK 13 IN NEWBERG'S ADDITION TO CHICAGO IN SECTION 9, TOWNSHIP 39 NORTH, RANGE 14, EAST OF THE THIRD PRINCIPAL MERIDIAN, EXCEPTING THEREFROM THE FOLLOWING DESCRIBED PARCELS:

(EXCEPTION MARCEL 1):

THAT PLOT CLOTS 1, 2, 3, 4, AND THE SOUTH HALF OF LOT 6, LYING BELOW A HORIZONTAL PLANE OF +37.2 CITY OF CHICAGO MATRIAL, AND LYING ABOVE A HORIZONTAL PLANE OF +14.75 CITY OF CHICAGO DATUM, IN BLOCK 13 IN NEWBERRY'S ADDITION TO CHICAGO IN SECTION 16 OF TOWNSHIP 36 NORTH, RANGE 14, EAST OF THE THIRD PRINCIPAL MERIDIAN, ACCORDING TO FOLLOW: BEGINNING AT A POINT 20.32 FEET WEST AND 1.62 FEET NORTH OF THE SOUTHEAST CORNER OF SAID LOT 1; THENCE NORTH PARALLEL WITH THE EAST LINE OF SAID LOT 1, A DISTANCE OF 16.43 FEET; THENCE NORTHERLY ALONG A CURVED LINE CONVEX SOUTHWESTERLY AND HAVING A RADIUS OF 16.35 FEET, AN ARC DISTANCE OF 8.85 FEET; THENCE NORTH PARALLEL WITH THE EAST LINE OF SAID LOTS, A DISTANCE OF 11.81 FEET; THENCE WESTERLY ALONG A STRAIGHT LINE, A DISTANCE OF 8.65 FEET TO A POINT, SAID POINT BEING 45.14 FEET NORTH AND 73.87 FEET WEST OF THE SOUTHEAST CORNER OF SAID LOT 1; THENCE SOUTH PARALLEL WITH THE EAST LINE OF SAID LOTS, A DISTANCE OF 1.54 FEET; THENCE WEST PERPENDICULAR TO THE LAST DESCRIBED LINE, A DISTANCE OF 5.94 FEET; THENCE NORTH PARALLEL WITH THE EAST LINE OF SAID LOTS, A DISTANCE OF 5.43 FEET; THENCE WEST PERPENDICULAR TO THE LAST DESCRIBED LINE, A DISTANCE OF 31.65 FEET; THENCE SOUTH PARALLEL WITH THE EAST LINE OF SAID LOTS, A DISTANCE OF 1.40 FEET; THENCE WESTERLY ALONG A STRAIGHT LINE, A DISTANCE OF 19.42 FEET TO A POINT, SAID POINT BEING 2.45 FEET WEST AND 68.58 FEET NORTH OF THE SOUTHEAST CORNER OF SAID LOT 1; THENCE SOUTH PARALLEL WITH THE EAST LINE OF SAID LOTS, A DISTANCE OF 2.45 FEET; THENCE WEST PERPENDICULAR TO THE LAST DESCRIBED LINE, A DISTANCE OF 4.64 FEET; THENCE NORTH PARALLEL WITH THE EAST LINE OF SAID LOTS, A DISTANCE OF 28.92 FEET; THENCE EAST PERPENDICULAR TO THE LAST DESCRIBED LINE, A DISTANCE OF 0.72 FEET TO THE POINT OF BEGINNING, ALL IN COOK COUNTY, ILLINOIS.

(EXCEPTION PARCEL 2):

[illegible]

(EXCEPTION PARCEL 3):

[illegible]

(EXCEPT PARCEL 4):

[illegible]

(EXCEPTION PARCELS):

[illegible]

PARCEL 2: (21st and 27th Floors)

LOTS 1, 2, 3, 4, 5 AND THE SOUTH HALF OF LOT 6, LYING ABOVE A HORIZONTAL PLANE OF +209.50 CITY OF CHICAGO DATUM, AND LYING BELOW A HORIZONTAL PLANE OF +220.41 CITY OF CHICAGO DATUM, AND ALSO LYING ABOVE A HORIZONTAL PLANE OF +274.47 CITY OF CHICAGO DATUM, AND LYING BELOW A HORIZONTAL PLANE OF +284.30 CITY OF CHICAGO DATUM, IN BLOCK 13 IN NEWBERRY'S ADDITION TO CHICAGO IN SECTION 9, TOWNSHIP 39 NORTH, RANGE 14, EAST OF THE THIRD PRINCIPAL MERIDIAN, IN COOK COUNTY, ILLINOIS.

PARCEL 3: (23rd, 24th and 25th Floors)

LOTS 1, 2, 3, 4, 5 AND THE SOUTH HALF OF LOT 6, LYING ABOVE A HORIZONTAL PLANE OF +231.90 CITY OF CHICAGO DATUM, AND LYING BELOW A HORIZONTAL PLANE OF +262.98 CITY OF CHICAGO DATUM, IN BLOCK 13 IN NEWBERRY'S ADDITION TO CHICAGO IN SECTION 9, TOWNSHIP 39 NORTH, RANGE 14, EAST OF THE THIRD PRINCIPAL MERIDIAN, IN COOK COUNTY, ILLINOIS

PARCEL 4 : (Units 2202 and 2203)

THAT PART OF LOTS 1, 2, 3, 4 AND THE SOUTH HALF OF LOT 6, LYING ABOVE A HORIZONTAL PLANE IN +328.61 CITY OF CHICAGO DATUM AND LYING BELOW A HORIZONTAL PLANE OF +321.91 CITY OF CHICAGO DATUM, IN BLOCK 13 IN NEIGHBORHOOD ADDITION TO CHICAGO IN SECTION 9, TOWNSHIP 39 NORTH, RANGE 14, EAST OF THE THIRD PRINCIPAL MERIDIAN BEGINS AS FOLLOWS; BEGINNING AT THE SOUTHWEST CORNER OF SAID LOT 1; THENCE EAST ALONG THE SOUTH LINE OF SAID LOT 1, A DISTANCE OF 25.30 FEET; THENCE NORTH PARALLEL WITH THE WEST LINE OF SAID LOTS, A DISTANCE OF 62.91 FEET; THENCE WEST PARALLEL WITH THE SOUTH LINE OF SAID LOT 1, A DISTANCE OF 4.09 FEET; THENCE NORTH PARALLEL WITH THE WEST LINE OF SAID LOT 1, A DISTANCE OF 3.76 FEET; THENCE NORTH PARALLEL WITH THE SOUTH LINE OF SAID LOT 1, A DISTANCE OF 1.91 FEET; THENCE EAST PARALLEL WITH THE SOUTH LINE OF SAID LOT 1, A DISTANCE OF 3.81 FEET; THENCE EAST PARALLEL WITH THE WEST LINE OF SAID LOT 1, A DISTANCE OF 20.89 FEET; THENCE SOUTH PARALLEL WITH THE WEST LINE OF SAID LOTS, A DISTANCE OF 18.69 FEET; THENCE SOUTH PARALLEL WITH THE SOUTH LINE OF SAID LOT 1, A DISTANCE OF 18.27 FEET; THENCE NORTH PARALLEL WITH THE WEST LINE OF SAID LOT 1, A DISTANCE OF 23.14 FEET; THENCE WEST PARALLEL WITH THE SOUTH LINE OF SAID LOT 1, A DISTANCE OF 18.09 FEET; THENCE SOUTH PARALLEL WITH THE WEST LINE OF SAID LOTS, A DISTANCE OF 8.85 FEET; THENCE WEST PARALLEL WITH THE SOUTH LINE OF SAID LOTS, A DISTANCE OF 3.31 FEET; THENCE WEST PARALLEL WITH THE WEST LINE OF SAID LOTS, A DISTANCE OF 1.94 FEET; THENCE NORTH PARALLEL WITH THE WEST LINE OF SAID LOT 1, A DISTANCE OF 3.35 FEET; THENCE WEST PARALLEL WITH THE SOUTH LINE OF SAID LOT 1, A DISTANCE OF 3.35 FEET; THENCE NORTH PARALLEL WITH THE SOUTH LINE OF SAID LOTS, A DISTANCE OF 54.48 FEET TO A POINT IN THE NORTH LINE OF THE SOUTH HALF OF SAID LOT 4, SAID POINT BEING 1.11 FEET FROM THE NORTHWEST CORNER OF THE SOUTH HALF OF SAID LOT 6; THENCE WEST ALONG THE SOUTH LINE OF THE SOUTH HALF OF SAID LOT 4, A DISTANCE OF 41.85 FEET TO THE NORTHEAST CORNER OF THE SOUTH HALF OF SAID LOT 6; THENCE SOUTH ALONG THE WEST LINE OF SAID LOTS, A DISTANCE OF 15.11 FEET TO THE POINT OF BEGINNING, ALL IN COOK COUNTY, ILLINOIS.

PARCEL 5: (UNIT 2601)

THAT PART OF LOTS 1, 2, 3 & 4 AND THE SOUTH HALF OF LOT 6, LYING ABOVE A HORIZONTAL PLANE OF +362.98 FEET OF CHICAGO DATUM AND LYING BELOW A HORIZONTAL PLANE OF +370.00 FEET OF CHICAGO DATUM, IN BLOCK 13 IN NEWBERRY'S ADDITION TO CHICAGO IN SECTION 9, TOWNSHIP 19 NORTH, RANGE 14, EAST OF MERIDIAN, AS DISCUSSED AS FOLLOWS: BEGINNING AT THE SOUTHWEST CORNER OF SAID LOT 1; THENCE NORTH 89° 57' 00" WEST, A DISTANCE OF 19.85 FEET TO THE SOUTHWEST CORNER OF SAID LOT 1; THENCE NORTH 89° 57' 00" WEST, A DISTANCE OF 47.01 FEET; THENCE EAST PARALLEL WITH THE SOUTH LINE OF SAID LOT 1, A DISTANCE OF 1.84 FEET; THENCE SOUTH PARALLEL WITH THE WEST LINE OF SAID LOTS, A DISTANCE OF 2.04 FEET; THENCE SOUTH PARALLEL WITH THE WEST LINE OF SAID LOTS, A DISTANCE OF 8.12 FEET; THENCE SOUTH PARALLEL WITH THE WEST LINE OF SAID LOTS, A DISTANCE OF 7.81 FEET; THENCE SOUTH PARALLEL WITH THE SOUTH LINE OF SAID LOT 1, A DISTANCE OF 4.95 FEET; THENCE NORTH PARALLEL WITH THE SOUTH LINE OF SAID LOT 1, A DISTANCE OF 7.0 FEET; THENCE EAST PARALLEL WITH THE SOUTH LINE OF SAID LOT 1, A DISTANCE OF 2.40 FEET; THENCE SOUTH PARALLEL WITH THE WEST LINE OF SAID LOTS, A DISTANCE OF 7.0 FEET; THENCE SOUTH PARALLEL WITH THE WEST LINE OF SAID LOTS, A DISTANCE OF 2.77 FEET; THENCE SOUTH PARALLEL WITH THE WEST LINE OF SAID LOT 1, A DISTANCE OF 2.77 FEET; THENCE SOUTH PARALLEL WITH THE WEST LINE OF SAID LOT 1, A DISTANCE OF 1.04 FEET; THENCE SOUTH PARALLEL WITH THE WEST LINE OF SAID LOT 1, A DISTANCE OF 6.21 FEET; THENCE SOUTH PARALLEL WITH THE SOUTH LINE OF SAID LOT 1, A DISTANCE OF 8.39 FEET; THENCE EAST PARALLEL WITH THE SOUTH LINE OF SAID LOT 1, A DISTANCE OF 1.00 FEET; THENCE SOUTH PARALLEL WITH THE WEST LINE OF SAID LOTS, A DISTANCE OF 14.06 FEET; THENCE EAST PARALLEL WITH THE SOUTH LINE OF SAID LOT 1, A DISTANCE OF 4.22 FEET; THENCE NORTH PARALLEL WITH THE WEST LINE OF SAID LOTS, A DISTANCE OF 2.77 FEET; THENCE SOUTH PARALLEL WITH THE SOUTH LINE OF SAID LOT 1, A DISTANCE OF 26.34 FEET TO A POINT ON THE EAST CORNER OF SAID PARCELS, WITH THE SOUTH LINE OF SAID LOT 1 OF THE SOUTHEAST CORNER OF SAID LOT 1; THENCE SOUTH ALONG THE EAST CORNER OF SAID LOTS, A DISTANCE OF 86.68 FEET TO THE SOUTHEAST CORNER OF SAID LOT 1; THENCE WEST ALONG THE SOUTH LINE OF SAID LOT 1, A DISTANCE OF 110.38 FEET TO THIS POINT OF BEGINNING, ALL IN COOK COUNTY, ILLINOIS.

PARCEL 6: (UNIT 2602)

[illegible]

AMENDED THIS 29TH DAY OF JUNE, 2007 TO
ADD UNIT 2602 TO CONDOMINIUM SURVEY

DOMINICK M. BLIZNICK
(ILLINOIS PROFESSIONAL LAND SURVEYOR NO. 3390)
LICENSE EXPIRATION: 11-30-08

**AS AMENDED
EXHIBIT D
PAGE 2 OF 22**

GRAND ON GRAND CONDOMINIUM

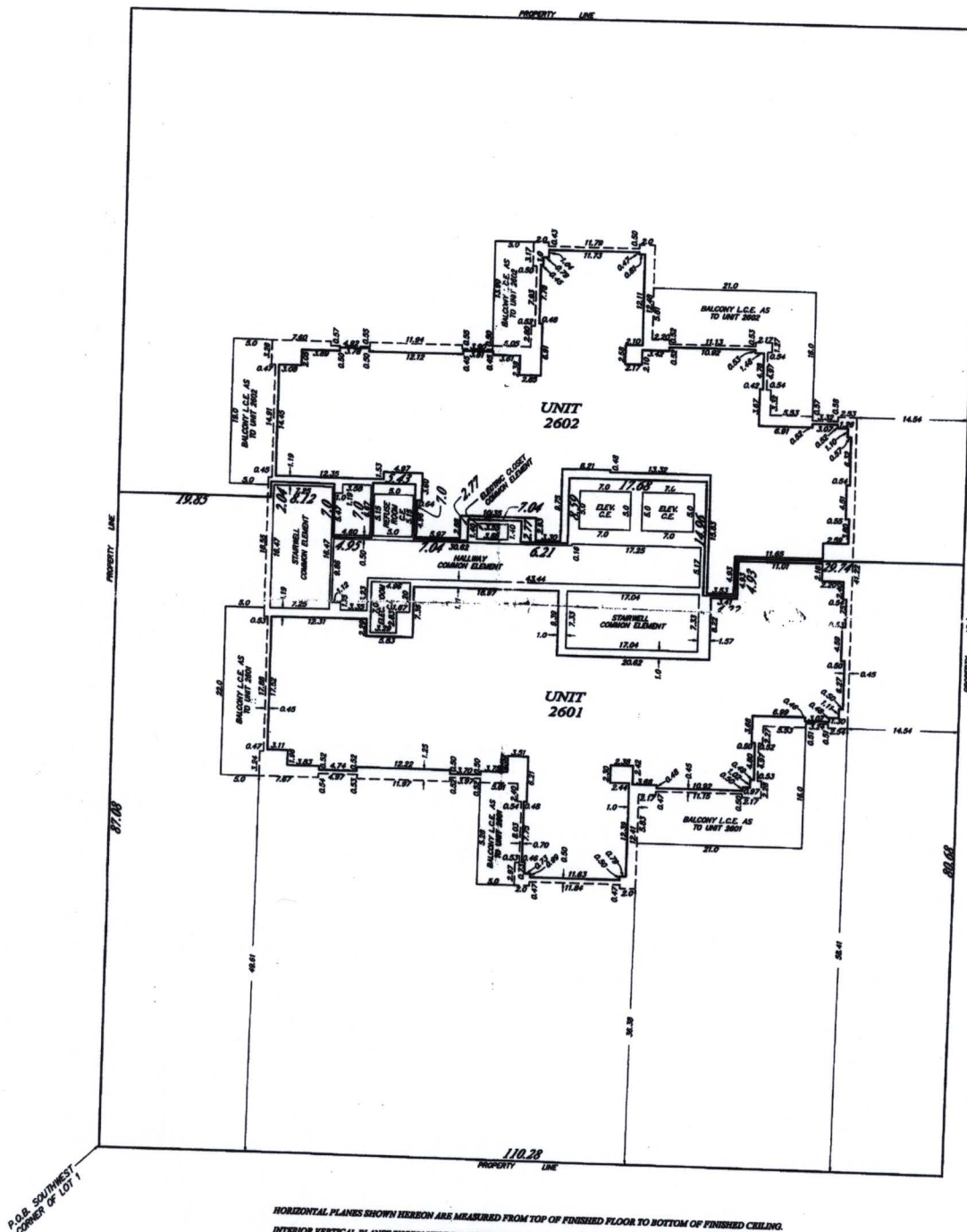
0718322128

ORDER NO.
04-1214

TWENTY-SIXTH FLOOR

DOCUMENT
WITH THIS EXHIBIT

Scale - 1 inch = 10 feet



P.O.B. SOUTHWEST
CORNER OF LOT 1

HORIZONTAL PLANES SHOWN HEREON ARE MEASURED FROM TOP OF FINISHED FLOOR TO BOTTOM OF FINISHED CEILING.
INTERIOR VERTICAL PLANES SHOWN HEREON ARE MEASURED FROM, TO AND ALONG FINISHED FACE OF INTERIOR WALLS.
UPPER ELEVATION OF UNIT THIS FLOOR ONLY - 260.30
LOWER ELEVATION OF UNIT THIS FLOOR ONLY - 253.19
ELEVATIONS SHOWN HEREON ARE IN REFERENCE TO CITY OF CHICAGO STANDARD BENCH MARK NO. 2279, LOCATED AT THE
SOUTHWEST CORNER OF ILLINOIS AND WELLS STREETS. ELEVATION: 16.377.

Doc#: 0718322128 Fee: \$118.00
Cook County Recorder of Deeds
Date: 07/02/2007 12:20 PM Pg. 1 of 20

PREPARED BY:
JENS E. DOE PROFESSIONAL
LAND SURVEYORS P.C.
143 SUMMIT ST.
ELEM GROVE VILLAGE, IL 60007
(847) 724-8530

AMENDED THIS 19TH DAY OF JUNE, 2007 TO AND UNIT 2602
TO CONDOMINIUM SURVEY
DOMINICK M. BLEWICK
(ILLINOIS PROFESSIONAL LAND SURVEYOR NO. 3390)
LICENSE EXPIRATION 11-30-08

AS AMENDED
EXHIBIT D
PAGE 29 OF 29