



Doc#: 0902734069 Fee: \$118.00
Eugene "Gene" Moore RHSP Fee: \$10.00
Cook County Recorder of Deeds
Date: 01/27/2009 01:35 PM Pg: 1 of 17

This document prepared by and
after recordation should be
returned to:
David Chaiken
111 W. Washington, #823
Chicago, IL 60602

This space reserved for Recorder's Use only

EIGHTH AMENDMENT TO DECLARATION
OF CONDOMINIUM OWNERSHIP
PURSUANT TO THE CONDOMINIUM PROPERTY ACT
GRAND ON GRAND CONDOMINIUMS

THIS EIGHTH AMENDMENT TO DECLARATION ("Amendment") is made and
entered into by Grand Wells Development, LLC, an Illinois limited liability company,
(hereinafter referred to as "Declarant");

WHEREAS, by that certain Declaration of Condominium Ownership on June 16,
2004, Grand Wells Development, LLC., an Illinois limited liability company, executed
the Declaration of Condominium for the Grand on Grand Condominium and recorded on
June 16, 2004, with the Cook County Recorder of Deeds, as Document Number
0416834048 (the "Declaration"), on December 7, 2004 executed the First Amendment to
the Declaration of Condominium recorded on December 20, 2004 with the Cook County
Recorder of Deeds as Document Number 0435527026 and on January 24, 2005 executed
the Second Amendment to the Declaration of Condominium recorded on January 27,
2005 with the Cook County Recorder of Deeds as Document Number 0502734055 and
on December 13, 2005 executed the Third Amendment to the Declaration of
Condominium recorded on December 16, 2005 and on June 15, 2006 executed the Fourth
Amendment to the Declaration of Condominium recorded on June 16, 2006 with the
Cook County Recorder of Deeds as Document Number 0061673095 on June 19, 2006
executed the Fifth Amendment to the Declaration of Condominium recorded on June 20,
2006 with the Cook County Recorder of Deeds as Document Number 00617110065 to
correct the Fourth Amendment, and on June 26, 2006, executed the Sixth Amendment to
Declaration of Condominium recorded on June 27, 2007, with the Cook County Recorder
of Deeds as Document Number 0617831005, and on June 19, 2007 executed the Seventh
Amendment to the Declaration of Condominium recorded on July 2, 2007 as Document
Number 0718322128 the Declarant submitted certain real estate legally described on
Exhibit A attached hereto and made a part hereof the Condominium Property Act of the
State of Illinois (the "Act"), said Condominium being known as the Grand On Grand
Condominium (the "Condominium");

WHEREAS, the Declarant desires, pursuant to Section 22 of the Declaration and
for the purposes above set forth, hereby declares that the Declaration be and hereby is
amended as follows:

CTE 8117046 D8L

1. All capitalized terms used in this Amendment and not otherwise defined in this Amendment shall have the meanings ascribed to them in the Declaration.
2. Exhibit A of the Declaration is hereby corrected per the attached Exhibit A.
3. Exhibit B of the Declaration is hereby amended by deleting it in its entirety and substituting in its place the corrected attached Exhibit B.
4. Exhibit D to the Declaration is hereby amended by inserting 28 of the Plat.
5. This Amendment is pursuant to Section 22 to bring the Declaration in compliance with the Act.

IN WITNESS WHEREOF, Grand Wells Development, LLC, has caused its name to be signed to these presents as of this 29 day of October, 2008

Grand Wells Development, LLC

By: _____

Mark Sutherland, Manager

STATE OF ILLINOIS)

) SS

COUNTY OF COOK)

I, the undersigned, a Notary Public in and for the County and State aforesaid, DO HEREBY CERTIFY that Mark Sutherland, the Manager of said company, personally known to me to be the same person whose name is subscribed to the foregoing instrument, appeared before me this day in person, and acknowledged that he signed, sealed and delivered the said instrument as his free and voluntary act, for the uses and purposes therein set forth

Given under my hand and notary seal, this 29 day of October, 2008



NOTARY PUBLIC

Irina Sfirnaciuc

EXHIBIT A

UNIT NUMBERS 601, 603, 604, 605, 606, 701, 702, 703, 704, 705, 706, 801, 802, 803, 804, 805, 806, 901, 902, 903, 904, 905, 906, 1001, 1002, 1003, 1004, 1005, 1006, 1101, 1102, 1103, 1104, 1105, 1106, 1201, 1202, 1203, 1204, 1205, 1206, 1301, 1302, 1303, 1304, 1305, 1306, 1401, 1402, 1403, 1404, 1405, 1406, 1501, 1502, 1503, 1504, 1505, 1506, 1601, 1602, 1603, 1604, 1605, 1606, 1701, 1702, 1703, 1704, 1705, 1706, 1801, 1802, 1803, 1804, 1805, 1806, 1901, 1903, 1904, 1905, 1906, 2001, 2002, 2003, 2004, 2005, 2006, 2101, 2102, 2103, 2104, 2105, 2106, 2202, 2203, 2204, 2301, 2303, 2304, 2401, 2501, 2502, 2601, 2602, 2701, P1, P2, P3, P4, P5, P6, P7, P8, P9, P10, P11, P12, P13, P14, P15, P16, P17, P18, P19, P20, P21, P22, P23, P24, P25, P26, P27, P28, P29, P30, P31, P32, P33, P34, P35, P36, P37, P38, P39, P40, P41, P42, P43, P44, P45, P46, P47, P48, P49, P50, P51, P52, P53, P54, P55, P56, P57, P58, P59, P60, P60, P61, P62, P63, P64, P65, P66, P67, P68, P69, P70, P71, P72, P73, P74, P75, P76, P77, P78, P79, P80, P80, P81, P82, P83, P84, P85, P86, P87, P88, P89, P90, P91, P92, P93, P94, P95, P96, P97, P98, P99, P100, P101, P102, P103, P104, P105, P106, P107, P108, P109, P110, P111, P112, P113, P114, P115, P116, P117, P118, P119, P120, P121, P122, P123, P124, P125, P126, P127, P128, P129, P130, P131, SR1, SR2, SR3, SR4, SR5, SL1, SL2, SL3, SL4, SL5, SL6, SL7, SL8, L9, SL10, SL11, SL12, SL13, SL14, SL15, SL16, SL17, SL18, SL19, SL20, SL21, SL22, SL23, SL24, SL25, SL26 IN THE GRAND ON GRAND CONDOMINIUM AS DELINEATED ON THE SURVEY OF THE FOLLOWING DESCRIBED REAL ESTATE:

LOTS 1, 2, 3, 4, 5 AND THE SOUTH HALF OF LOT 6, IN BLOCK 13 IN NEWBERRY'S ADDITION TO CHICAGO IN SECTION 9, TOWNSHIP 39 NORTH, RANGE 14, EAST OF THE THIRD PRINCIPAL MERIDIAN, EXCEPTING THEREFROM THE FOLLOWING DESCRIBED PARCELS:

(EXCEPTION PARCEL 1) :

THAT PART OF LOTS 1, 2, 3, 4, 5 AND THE SOUTH HALF OF LOT 6, LYING BELOW A HORIZONTAL PLANE OF + 32.72 CITY OF CHICAGO DATUM, AND LYING ABOVE A HORIZONTAL PLANE OF + 14.75 CITY OF CHICAGO DATUM, IN BLOCK 13 IN NEWBERRY'S ADDITION TO CHICAGO IN SECTION 9, TOWNSHIP 39 NORTH, RANGE 14, EAST OF THE THIRD PRINCIPAL MERIDIAN, DESCRIBED AS FOLLOWS: BEGINNING AT A POINT 50.28 FEET WEST AND 3.46 FEET NORTH OF THE SOUTHEAST CORNER OF SAID LOT 1: THENCE NORTH PARALLEL WITH THE EAST LINE OF SAID LOTS, A DISTANCE OF 16.0 FEET; THENCE NORTHERLY ALONG A CURVED LINE CONVEX SOUTHWESTERLY AND HAVING A RADIUS OF 16.25 FEET, AN ARC DISTANCE OF 8.05 FEET; THENCE NORTH PARALLEL WITH THE EAST LINE OF SAID LOTS, A DISTANCE OF 11.01 FEET; THENCE NORTHWESTERLY ALONG A STRAIGHT LINE, A DISTANCE OF 8.63 FEET TO A POINT, SAID POINT BEING 45.14 FEET NORTH AND 72.09 FEET WEST OF THE SOUTHEAST CORNER OF SAID LOT 1; THENCE SOUTH PARALLEL WITH THE EAST LINE OF SAID LOTS, A DISTANCE OF 1.18 FEET; THENCE WEST PERPENDICULAR TO THE LAST DESCRIBED LINE, A DISTANCE OF 5.96 FEET; THENCE NORTH PARALLEL WITH THE EAST LINE OF SAID LOTS, A DISTANCE OF 1.56 FEET; THENCE WEST PERPENDICULAR TO THE LAST DESCRIBED LINE, A DISTANCE OF 0.48 FEET; THENCE NORTH PARALLEL WITH THE EAST LINE OF SAID LOTS, A DISTANCE OF 5.43 FEET; THENCE WEST PERPENDICULAR TO THE LAST DESCRIBED LINE, A DISTANCE OF 21.05 FEET; THENCE SOUTH PARALLEL WITH THE EAST LINE OF SAID LOTS, A DISTANCE OF 5.89 FEET; THENCE SOUTHEASTERLY ALONG A STRAIGHT LINE, A DISTANCE OF 19.42 FEET TO A POINT, SAID POINT BEING 79.79 FEET WEST AND 26.83 FEET NORTH OF THE SOUTHEAST CORNER OF SAID LOT 1; THENCE SOUTH PARALLEL WITH THE EAST LINE OF SAID LOTS, A DISTANCE OF 2.45 FEET; THENCE EAST PERPENDICULAR TO THE LAST DESCRIBED LINE, A DISTANCE OF 6.64 FEET; THENCE SOUTH PARALLEL WITH THE EAST LINE OF SAID LOTS, A DISTANCE OF 20.92 FEET; THENCE EAST PERPENDICULAR TO THE LAST DESCRIBED LINE, A DISTANCE OF 22.87 FEET TO THE POINT OF BEGINNING, ALL IN COOK COUNTY, ILLINOIS.

(EXCEPTION PARCEL 2) :

THAT PART OF LOTS 1, 2, 3, 4, 5 AND THE SOUTH HALF OF LOT 6, LYING BELOW A HORIZONTAL PLANE OF + 28.70 CITY OF CHICAGO DATUM, AND LYING ABOVE A HORIZONTAL PLANE OF + 14.75 CITY OF CHICAGO DATUM, IN BLOCK 13 IN NEWBERRY'S ADDITION TO CHICAGO IN SECTION 9, TOWNSHIP 39 NORTH, RANGE 14, EAST OF THE THIRD PRINCIPAL MERIDIAN, DESCRIBED AS FOLLOWS: BEGINNING AT A POINT 2.96 FEET SOUTH AND 3.13 FEET WEST OF THE NORTHEAST CORNER OF THE SOUTH HALF OF LOT 6; THENCE SOUTH PARALLEL WITH THE EAST LINE OF SAID LOTS, A DISTANCE OF 36.99 FEET; THENCE WEST PERPENDICULAR TO THE LAST DESCRIBED LINE, A DISTANCE OF 1.46 FEET; THENCE SOUTH PARALLEL TO THE EAST LINE OF SAID LOTS, A DISTANCE OF 2.05 FEET; THENCE WEST

PERPENDICULAR TO THE LAST DESCRIBED LINE, A DISTANCE OF 21.0 FEET; THENCE SOUTH PARALLEL TO THE EAST LINE OF SAID LOTS, A DISTANCE OF 17.32 FEET; THENCE WEST PERPENDICULAR TO THE LAST DESCRIBED LINE, A DISTANCE OF 27.08 FEET; THENCE NORTH PARALLEL WITH THE EAST LINE OF SAID LOTS, A DISTANCE OF 15.51 FEET; THENCE WEST PERPENDICULAR TO THE LAST DESCRIBED LINE, A DISTANCE OF 2.59 FEET; THENCE NORTH PARALLEL TO THE EAST LINE OF SAID LOTS, A DISTANCE OF 4.29 FEET; THENCE WEST PERPENDICULAR TO THE LAST DESCRIBED LINE, A DISTANCE OF 3.58 FEET; THENCE NORTH PARALLEL WITH THE EAST LINE OF SAID LOTS, A DISTANCE OF 12.60 FEET; THENCE EAST PERPENDICULAR TO THE LAST DESCRIBED LINE, A DISTANCE OF 1.76 FEET; THENCE NORTH PARALLEL TO THE EAST LINE OF SAID LOTS, A DISTANCE OF 5.50 FEET; THENCE EAST PERPENDICULAR TO THE LAST DESCRIBED LINE, A DISTANCE OF 1.38 FEET; THENCE NORTH PARALLEL TO THE EAST LINE OF SAID LOTS, A DISTANCE OF 2.49 FEET; THENCE EAST PERPENDICULAR TO THE LAST DESCRIBED LINE, A DISTANCE OF 2.04 FEET; THENCE NORTH PARALLEL WITH THE EAST LINE OF SAID LOTS, A DISTANCE OF 16.97 FEET; THENCE EAST PERPENDICULAR TO THE LAST DESCRIBED LINE, A DISTANCE OF 21.99 FEET; THENCE SOUTH PARALLEL WITH THE EAST LINE OF SAID LOTS, A DISTANCE OF 1.0 FEET; THENCE EAST PERPENDICULAR TO THE LAST DESCRIBED LINE, A DISTANCE OF 2.01 FEET; THENCE NORTH PARALLEL WITH THE EAST LINE OF SAID LOTS, A DISTANCE OF 1.36 FEET; THENCE EAST PERPENDICULAR TO THE LAST DESCRIBED LINE, A DISTANCE OF 24.23 FEET; THENCE SOUTH PARALLEL WITH THE EAST LINE OF SAID LOTS, A DISTANCE OF 1.36 FEET; THENCE EAST PERPENDICULAR TO THE LAST DESCRIBED LINE, A DISTANCE OF 2.30 FEET TO THE POINT OF BEGINNING, ALL IN COOK COUNTY, ILLINOIS.

(EXCEPTION PARCEL 3) :

THAT PART OF LOTS 1, 2, 3, 4, 5 AND THE SOUTH HALF OF LOT 6, LYING BELOW A HORIZONTAL PLANE OF + 33.05 CITY OF CHICAGO DATUM, AND LYING ABOVE A HORIZONTAL PLANE OF + 14.75 CITY OF CHICAGO DATUM, IN BLOCK 13 IN NEWBERRY'S ADDITION TO CHICAGO IN SECTION 9, TOWNSHIP 39 NORTH, RANGE 14, EAST OF THE THIRD PRINCIPAL MERIDIAN, DESCRIBED AS FOLLOWS : BEGINNING AT A POINT 50.18 FEET NORTH AND 1.41 FEET WEST OF THE SOUTHEAST CORNER OF SAID LOT 1; THENCE NORTH PARALLEL WITH THE EAST LINE OF SAID LOTS, A DISTANCE OF 10.29 FEET; THENCE WEST PERPENDICULAR TO THE LAST DESCRIBED LINE, A DISTANCE OF 1.35 FEET; THENCE NORTH PARALLEL WITH THE EAST LINE OF SAID LOTS, A DISTANCE OF 2.0 FEET; THENCE EAST PERPENDICULAR TO THE LAST DESCRIBED LINE, A DISTANCE OF 1.35 FEET; THENCE NORTH PARALLEL WITH THE EAST LINE OF SAID LOTS, A DISTANCE OF 10.30 FEET; THENCE WEST PERPENDICULAR TO THE LAST DESCRIBED LINE, A DISTANCE OF 23.88 FEET; THENCE NORTH PARALLEL WITH THE EAST LINE OF SAID LOTS, A DISTANCE OF 19.54 FEET; THENCE WEST PERPENDICULAR TO THE LAST DESCRIBED LINE, A DISTANCE OF 7.22 FEET; THENCE SOUTH PARALLEL WITH THE EAST LINE OF SAID LOTS, A DISTANCE OF 25.10 FEET; THENCE EAST PERPENDICULAR TO THE LAST DESCRIBED LINE, A DISTANCE OF 0.31 FEET; THENCE SOUTH PARALLEL WITH THE EAST LINE OF SAID LOTS, A DISTANCE OF 23.74 FEET; THENCE EAST PERPENDICULAR TO THE LAST DESCRIBED LINE, A DISTANCE OF 3.27 FEET; THENCE NORTH PARALLEL WITH THE EAST LINE OF SAID LOTS, A DISTANCE OF 1.09 FEET; THENCE EAST PERPENDICULAR TO THE LAST DESCRIBED LINE, A DISTANCE OF 2.50 FEET; THENCE SOUTH PARALLEL WITH THE EAST LINE OF SAID LOTS, A DISTANCE OF 0.38 FEET; THENCE EAST PERPENDICULAR TO THE LAST DESCRIBED LINE, A DISTANCE OF 10.77 FEET; THENCE NORTH PARALLEL WITH THE EAST LINE OF SAID LOTS, A DISTANCE OF 5.10 FEET; THENCE EAST PERPENDICULAR TO THE LAST DESCRIBED LINE, A DISTANCE OF 4.0 FEET; THENCE SOUTH PARALLEL WITH THE EAST LINE OF SAID LOTS, A DISTANCE OF 0.40 FEET; THENCE EAST PERPENDICULAR TO THE LAST DESCRIBED LINE, A DISTANCE OF 8.55 FEET; THENCE NORTH PARALLEL WITH THE EAST LINE OF SAID LOTS, A DISTANCE OF 1.30 FEET; THENCE EAST PERPENDICULAR TO THE LAST DESCRIBED LINE, A DISTANCE OF 1.70 FEET TO THE POINT OF BEGINNING, ALL IN COOK COUNTY, ILLINOIS.

(EXCEPTION PARCEL 4) :

THAT PART OF LOTS 1, 2, 3, 4, 5 AND THE SOUTH HALF OF LOT 6, LYING BELOW A HORIZONTAL PLANE OF +28.70 TO A POINT +33.05 CITY OF CHICAGO DATUM, AND LYING ABOVE A HORIZONTAL PLANE OF + 14.75 CITY OF CHICAGO DATUM, IN BLOCK 13 IN NEWBERRY'S ADDITION TO CHICAGO IN SECTION 9, TOWNSHIP 39 NORTH, RANGE 14, EAST OF THE THIRD PRINCIPAL MERIDIAN, DESCRIBED AS FOLLOWS : BEGINNING AT A POINT 42.0 FEET SOUTH AND 1.36 FEET WEST OF THE NORTHEAST CORNER OF THE SOUTH HALF OF SAID LOT 6, SAID POINT HAVING AN UPPER ELEVATION OF +28.70 CITY OF CHICAGO DATUM; THENCE SOUTH PARALLEL WITH THE EAST LINE OF SAID LOTS, A DISTANCE OF 10.30 FEET; THENCE WEST PERPENDICULAR TO THE LAST DESCRIBED LINE, A DISTANCE OF 1.30 FEET; THENCE SOUTH PARALLEL WITH THE EAST LINE OF SAID LOTS, A DISTANCE OF 1.98 FEET; THENCE EAST PERPENDICULAR TO THE LAST DESCRIBED LINE, A DISTANCE OF 1.33 FEET; THENCE SOUTH PARALLEL WITH THE EAST LINE OF SAID LOTS, A DISTANCE OF 10.31 FEET; THENCE WEST PERPENDICULAR TO THE LAST DESCRIBED LINE, A DISTANCE OF 2.03 FEET; THENCE SOUTH PARALLEL WITH THE EAST LINE OF

SAID LOTS, A DISTANCE OF 2.03 FEET; THENCE EAST PERPENDICULAR TO THE LAST DESCRIBED LINE, A DISTANCE OF 2.02 FEET; THENCE SOUTH PARALLEL WITH THE EAST LINE OF SAID LOTS, A DISTANCE OF 10.24 FEET; THENCE WEST PERPENDICULAR TO THE LAST DESCRIBED LINE, A DISTANCE OF 1.28 FEET; THENCE SOUTH PARALLEL WITH THE EAST LINE OF SAID LOTS, A DISTANCE OF 2.0 FEET TO A POINT, SAID POINT HAVING AN UPPER ELEVATION OF +33.05 CITY OF CHICAGO DATUM; THENCE WEST PERPENDICULAR TO THE LAST DESCRIBED LINE HAVING AN UPPER ELEVATION OF +33.05 CITY OF CHICAGO DATUM, A DISTANCE OF 22.52 FEET; THENCE NORTH PARALLEL WITH THE EAST LINE OF SAID LOTS, A DISTANCE OF 36.86 FEET TO A POINT, SAID POINT HAVING AN UPPER ELEVATION OF +28.70 CITY OF CHICAGO DATUM; THENCE EAST PERPENDICULAR TO THE LAST DESCRIBED LINE HAVING AN UPPER ELEVATION OF +28.70 CITY OF CHICAGO DATUM, A DISTANCE OF 23.78 FEET TO THE POINT OF BEGINNING, ALL IN COOK COUNTY, ILLINOIS.

(EXCEPTION PARCEL 5) :

THAT PART OF LOTS 1, 2, 3, 4, 5 AND THE SOUTH HALF OF LOT 6, LYING BELOW A HORIZONTAL PLANE OF + 32.72 CITY OF CHICAGO DATUM, AND LYING ABOVE A HORIZONTAL PLANE OF + 14.75 CITY OF CHICAGO DATUM, IN BLOCK 13 IN NEWBERRY'S ADDITION TO CHICAGO IN SECTION 9, TOWNSHIP 39 NORTH, RANGE 14, EAST OF THE THIRD PRINCIPAL MERIDIAN, DESCRIBED AS FOLLOWS: BEGINNING AT A POINT 29.32 FEET SOUTH AND 37.89 FEET EAST OF THE NORTHWEST CORNER OF THE SOUTH HALF OF SAID LOT 6; THENCE SOUTH PARALLEL WITH THE EAST LINE OF SAID LOTS, A DISTANCE OF 12.06 FEET; THENCE WEST PERPENDICULAR TO THE LAST DESCRIBED LINE, A DISTANCE OF 8.89 FEET; THENCE NORTH PARALLEL WITH THE EAST LINE OF SAID LOTS, A DISTANCE OF 2.06 FEET; THENCE WEST PERPENDICULAR TO THE LAST DESCRIBED LINE, A DISTANCE OF 0.62 FEET; THENCE NORTH PARALLEL WITH THE EAST LINE OF SAID LOTS, A DISTANCE OF 10.02 FEET; THENCE EAST PERPENDICULAR TO THE LAST DESCRIBED LINE, A DISTANCE OF 9.53 FEET, TO THE POINT OF BEGINNING, ALL IN COOK COUNTY, ILLINOIS.

Parcel 6

THAT PART OF LOTS 1, 2, 3, 4, 5 AND THE SOUTH HALF OF LOT 6, LYING ABOVE A HORIZONTAL PLANE OF +262.98 CITY OF CHICAGO DATUM AND LYING BELOW A HORIZONTAL PLANE OF +274.47 CITY OF CHICAGO DATUM, IN BLOCK 13 IN NEWBERRY'S ADDITION TO CHICAGO IN SECTION 9, TOWNSHIP 39 NORTH, RANGE 14, EAST OF THE THIRD PRINCIPAL MERIDIAN, DESCRIBED AS FOLLOWS: BEGINNING AT THE SOUTHWEST CORNER OF SAID LOT 1; THENCE NORTH ALONG THE WEST LINE OF SAID LOTS, A DISTANCE OF 87.08 FEET; THENCE EAST PARALLEL WITH THE SOUTH LINE OF SAID LOT 1, A DISTANCE OF 19.85 FEET; THENCE NORTH PARALLEL WITH THE WEST LINE OF SAID LOTS, A DISTANCE OF 2.04 FEET; THENCE EAST PARALLEL WITH THE SOUTH LINE OF SAID LOT 1, A DISTANCE OF 8.12 FEET; THENCE SOUTH PARALLEL WITH THE WEST LINE OF SAID LOTS, A DISTANCE OF 7.0 FEET; THENCE EAST PARALLEL WITH THE SOUTH LINE OF SAID LOT 1, A DISTANCE OF 4.95 FEET; THENCE NORTH PARALLEL WITH THE WEST LINE OF SAID LOTS, A DISTANCE OF 7.0 FEET; THENCE EAST PARALLEL WITH THE SOUTH LINE OF SAID LOT 1, A DISTANCE OF 5.43 FEET; THENCE SOUTH PARALLEL WITH THE WEST LINE OF SAID LOTS, A DISTANCE OF 7.0 FEET; THENCE EAST PARALLEL WITH THE SOUTH LINE OF SAID LOT 1, A DISTANCE OF 7.04 FEET; THENCE NORTH PARALLEL WITH THE WEST LINE OF SAID LOTS, A DISTANCE OF 2.77 FEET; THENCE EAST PARALLEL WITH THE SOUTH LINE OF SAID LOT 1, A DISTANCE OF 7.04 FEET; THENCE SOUTH PARALLEL WITH THE WEST LINE OF SAID LOTS, A DISTANCE OF 2.77 FEET; THENCE EAST PARALLEL WITH THE SOUTH LINE OF SAID LOT 1, A DISTANCE OF 6.21 FEET; THENCE NORTH PARALLEL WITH THE WEST LINE OF SAID LOTS, A DISTANCE OF 8.59 FEET; THENCE EAST PARALLEL WITH THE SOUTH LINE OF SAID LOT 1, A DISTANCE OF 17.68 FEET; THENCE SOUTH PARALLEL WITH THE WEST LINE OF SAID LOTS, A DISTANCE OF 14.96 FEET; THENCE EAST PARALLEL WITH THE SOUTH LINE OF SAID LOT 1, A DISTANCE OF 4.22 FEET; THENCE NORTH PARALLEL WITH THE WEST LINE OF SAID LOTS, A DISTANCE OF 4.93 FEET; THENCE EAST PARALLEL WITH THE SOUTH LINE OF SAID LOT 1, A DISTANCE OF 29.74 FEET TO A POINT ON THE EAST LINE OF SAID LOTS, SAID POINT BEING 80.68 FEET NORTH OF THE SOUTHEAST CORNER OF SAID LOT 1; THENCE SOUTH ALONG THE EAST LINE OF SAID LOTS, A DISTANCE OF 80.68 FEET TO THE SOUTHEAST CORNER OF SAID LOT 1; THENCE WEST ALONG THE SOUTH LINE OF SAID LOT 1, A DISTANCE OF 110.28 FEET TO THE POINT OF BEGINNING, ALL IN COOK COUNTY, ILLINOIS.

Parcel 7

THAT PART OF LOTS 1, 2, 3, 4, 5 AND THE SOUTH HALF OF LOT 6, LYING ABOVE A HORIZONTAL PLANE OF +262.98 CITY OF CHICAGO DATUM AND LYING BELOW A HORIZONTAL PLANE OF +274.47 CITY OF CHICAGO DATUM, IN BLOCK 13 IN NEWBERRY'S ADDITION TO CHICAGO IN SECTION 9, TOWNSHIP 39 NORTH, RANGE 14, EAST OF THE THIRD PRINCIPAL MERIDIAN, DESCRIBED AS FOLLOWS: BEGINNING AT THE SOUTHWEST CORNER OF SAID LOT 1; THENCE NORTH ALONG THE WEST LINE OF SAID LOTS, A DISTANCE OF 87.08 FEET; THENCE EAST PARALLEL WITH THE SOUTH LINE OF SAID LOT 1, A DISTANCE OF 19.85 FEET; THENCE NORTH PARALLEL WITH THE WEST LINE OF SAID LOTS, A DISTANCE OF 2.04

FEET; THENCE EAST PARALLEL WITH THE SOUTH LINE OF SAID LOT 1, A DISTANCE OF 8.12 FEET; THENCE SOUTH PARALLEL WITH THE WEST LINE OF SAID LOTS, A DISTANCE OF 7.0 FEET; THENCE EAST PARALLEL WITH THE SOUTH LINE OF SAID LOT 1, A DISTANCE OF 4.95 FEET; THENCE NORTH PARALLEL WITH THE WEST LINE OF SAID LOTS, A DISTANCE OF 7.0 FEET; THENCE EAST PARALLEL WITH THE SOUTH LINE OF SAID LOT 1, A DISTANCE OF 5.43 FEET; THENCE SOUTH PARALLEL WITH THE WEST LINE OF SAID LOTS, A DISTANCE OF 7.0 FEET; THENCE EAST PARALLEL WITH THE SOUTH LINE OF SAID LOT 1, A DISTANCE OF 7.04 FEET; THENCE NORTH PARALLEL WITH THE WEST LINE OF SAID LOTS, A DISTANCE OF 2.77 FEET; THENCE EAST PARALLEL WITH THE SOUTH LINE OF SAID LOT 1, A DISTANCE OF 7.04 FEET; THENCE SOUTH PARALLEL WITH THE WEST LINE OF SAID LOTS, A DISTANCE OF 2.77 FEET; THENCE EAST PARALLEL WITH THE SOUTH LINE OF SAID LOT 1, A DISTANCE OF 6.21 FEET; THENCE NORTH PARALLEL WITH THE WEST LINE OF SAID LOTS, A DISTANCE OF 8.59 FEET; THENCE EAST PARALLEL WITH THE SOUTH LINE OF SAID LOT 1, A DISTANCE OF 17.68 FEET; THENCE SOUTH PARALLEL WITH THE WEST LINE OF SAID LOTS, A DISTANCE OF 14.96 FEET; THENCE EAST PARALLEL WITH THE SOUTH LINE OF SAID LOT 1, A DISTANCE OF 4.22 FEET; THENCE NORTH PARALLEL WITH THE WEST LINE OF SAID LOTS, A DISTANCE OF 4.93 FEET; THENCE EAST PARALLEL WITH THE SOUTH LINE OF SAID LOT 1, A DISTANCE OF 29.74 FEET TO A POINT ON THE EAST LINE OF SAID LOTS, SAID POINT BEING 80.68 FEET NORTH OF THE SOUTHEAST CORNER OF SAID LOT 1; THENCE SOUTH ALONG THE EAST LINE OF SAID LOTS, A DISTANCE OF 80.68 FEET TO THE SOUTHEAST CORNER OF SAID LOT 1; THENCE WEST ALONG THE SOUTH LINE OF SAID LOT 1, A DISTANCE OF 110.28 FEET TO THE POINT OF BEGINNING, ALL IN COOK COUNTY, ILLINOIS.

WHICH SURVEY IS ATTACHED AS EXHIBIT "D" TO THE DECLARATION OF CONDOMINIUM OWNERSHIP RECORDED AS DOCUMENT NO. 0435527026 IN THE RECORDER'S OFFICE OF COOK COUNTY, ILLINOIS, TOGETHER WITH ITS UNDIVIDED PERCENTAGE INTEREST IN THE COMMON ELEMENTS, AS AMENDED FROM TIME TO TIME

PIN: 17-09-237-011; 17-09-237-012; 17-09-237-013; 17-09-237-014

ADDRESS OF PROPERTY: 200 W. GRAND, CHICAGO, ILLINOIS 60610

GRAND ON GRAND CONDOMINIUM (10-23-08)

UNIT 2204

THAT PART OF LOTS 1, 2, 3, 4, 5 AND THE SOUTH HALF OF LOT 6, LYING ABOVE A HORIZONTAL PLANE OF +220.41 CITY OF CHICAGO DATUM AND LYING BELOW A HORIZONTAL PLANE OF +231.90 CITY OF CHICAGO DATUM, IN BLOCK 13 IN NEWBERRY'S ADDITION TO CHICAGO IN SECTION 9, TOWNSHIP 39 NORTH, RANGE 14, EAST OF THE THIRD PRINCIPAL MERIDIAN, (EXCEPT THAT PART THEREOF DESCRIBED AS FOLLOWS; BEGINNING AT THE SOUTHWEST CORNER OF SAID LOT 1; THENCE EAST ALONG THE SOUTH LINE OF SAID LOT 1, A DISTANCE OF 29.28 FEET; THENCE NORTH PARALLEL WITH THE WEST LINE OF SAID LOTS, A DISTANCE OF 62.84 FEET; THENCE EAST PARALLEL WITH THE SOUTH LINE OF SAID LOT 1, A DISTANCE OF 4.09 FEET; THENCE NORTH PARALLEL WITH THE WEST LINE OF SAID LOTS, A DISTANCE OF 6.21 FEET; THENCE EAST PARALLEL WITH THE SOUTH LINE OF SAID LOT 1, A DISTANCE OF 3.76 FEET; THENCE NORTH PARALLEL WITH THE WEST LINE OF SAID LOT 1, A DISTANCE OF 1.95 FEET; THENCE EAST PARALLEL WITH THE SOUTH LINE OF SAID LOT 1, A DISTANCE OF 1.18 FEET; THENCE NORTH PARALLEL WITH THE WEST LINE OF SAID LOTS, A DISTANCE OF 5.81 FEET; THENCE EAST PARALLEL WITH THE SOUTH LINE OF SAID LOT 1, A DISTANCE OF 20.03 FEET; THENCE SOUTH PARALLEL WITH THE WEST LINE OF SAID LOTS, A DISTANCE OF 9.29 FEET; THENCE EAST PARALLEL WITH THE SOUTH LINE OF SAID LOT 1, A DISTANCE OF 18.27 FEET; THENCE NORTH PARALLEL WITH THE WEST LINE OF SAID LOTS, A DISTANCE OF 23.14 FEET; THENCE WEST PARALLEL WITH THE SOUTH LINE OF SAID LOT 1, A DISTANCE OF 18.09 FEET; THENCE SOUTH PARALLEL WITH THE WEST LINE OF SAID LOTS, A DISTANCE OF 8.85 FEET; THENCE WEST PARALLEL WITH THE SOUTH LINE OF SAID LOT 1, A DISTANCE OF 5.52 FEET; THENCE NORTH PARALLEL WITH THE WEST LINE OF SAID LOTS, A DISTANCE OF 3.21 FEET; THENCE WEST PARALLEL WITH THE SOUTH LINE OF SAID LOT 1, A DISTANCE OF 7.94 FEET; THENCE NORTH PARALLEL WITH THE WEST LINE OF SAID LOTS, A DISTANCE OF 9.64 FEET; THENCE WEST PARALLEL WITH THE SOUTH LINE OF SAID LOT 1, A DISTANCE OF 3.23 FEET; THENCE NORTH PARALLEL WITH THE WEST LINE OF SAID LOTS, A DISTANCE OF 56.48 FEET TO A POINT IN THE NORTH LINE OF THE SOUTH HALF OF SAID LOT 6, SAID POINT BEING 41.83 FEET EAST OF THE NORTHWEST CORNER OF THE SOUTH HALF OF SAID LOT 6; THENCE WEST ALONG THE NORTH LINE OF THE SOUTH HALF OF SAID LOT 6, A DISTANCE OF 41.83 FEET TO THE NORTHWEST CORNER OF THE SOUTH HALF OF SAID LOT 6; THENCE SOUTH ALONG THE WEST LINE OF SAID LOTS, A DISTANCE OF 151.15 FEET TO THE POINT OF BEGINNING), ALL IN COOK COUNTY, ILLINOIS.

PIN: 17-09-237-011; 17-09-237-012; 17-09-237-013; 17-09-237-014

ADDRESS OF PROPERTY: 200 W. GRAND, CHICAGO, ILLINOIS 60610

EXHIBIT B

PERCENTAGE OF OWNERSHIP INTEREST
IN THE COMMON ELEMENTS

<u>UNIT</u>	<u>OWNERSHIP INTEREST IN THE COMMON ELEMENTS</u>
601	1.032%
701	0.945%
801	0.953%
901	0.962%
1001	0.971%
1101	0.980%
1201	0.987%
1301	0.996%
1401	1.005%
1501	1.014%
1601	0.839%
1701	1.031%
1801	1.040%
1901	1.935%
2001	1.057%
	0.000%
702	0.498%
802	0.503%
902	0.508%
1002	0.514%
1102	0.519%
1202	0.524%
1302	0.529%
1402	0.535%
1502	0.540%
1602	0.545%
1702	0.550%
1802	0.556%
	0.000%
2002	0.566%
603	0.856%
703	0.655%

803	0.664%
903	0.673%
1003	0.681%
1103	0.690%
1203	0.699%
1303	0.708%
1403	0.716%
1503	0.734%
1603	0.741%
1703	0.748%
1803	0.755%
1903	0.439%
2003	0.769%
604	0.821%
704	0.661%
804	0.667%
904	0.674%
1004	0.681%
1104	0.688%
1204	0.695%
1304	0.702%
1404	0.709%
1504	0.716%
1604	0.723%
1704	0.730%
1804	0.737%
1904	0.674%
2004	0.751%
605	0.542%
705	0.479%
805	0.484%
905	0.489%
1005	0.494%
1105	0.500%
1205	0.505%
1305	0.510%
1405	0.515%
1505	0.521%
1605	0.526%
1705	0.531%
1805	0.536%

1905	0.489%
2005	0.547%
606	0.909%
706	0.760%
806	0.769%
906	0.778%
1006	0.786%
1106	0.795%
1206	0.804%
1306	0.813%
1406	0.821%
1506	0.830%
1606	1.022%
1706	0.848%
1806	0.856%
1906	0.865%
2006	0.874%
2101	1.066%
2102	0.498%
2103	0.778%
2104	0.758%
2105	0.552%
2106	0.882%
2204	2.813%
2202	0.465%
2203	0.874%
	0.000%
2301	2.263%
	0.000%
2303	0.804%
2304	1.381%
2401	2.623%
	0.000%
2501	1.608%
2502	1.503%
2601	2.238%
2602	1.555%
2701	3.286%
	0.000%
P1	0.076%
P2	0.076%

P3	0.076%
P4	0.076%
P5	0.076%
P6	0.076%
P7	0.076%
P8	0.076%
P9	0.076%
P10	0.076%
P11	0.076%
P12	0.076%
P13	0.076%
P14	0.076%
P15	0.076%
P16	0.076%
P17	0.076%
P18	0.076%
P19	0.076%
P20	0.076%
P21	0.076%
P22	0.076%
P23	0.076%
P24	0.076%
P25	0.131%
P26	0.076%
P27	0.059%
P28	0.076%
P29	0.076%
P30	0.113%
P31	0.113%
P32	0.113%
P33	0.073%
P34	0.073%
P35	0.073%
P36	0.073%
P37	0.073%
P38	0.073%
P39	0.073%
P40	0.073%
P41	0.073%
P42	0.073%
P43	0.073%

P44	0.073%
P45	0.073%
P46	0.073%
P47	0.073%
P48	0.073%
P49	0.073%
P50	0.073%
P51	0.073%
P52	0.073%
P53	0.073%
P54	0.073%
P55	0.073%
P56	0.073%
P57	0.129%
P58	0.073%
P59	0.058%
P60	0.073%
P61	0.073%
P62	0.112%
P63	0.112%
P64	0.112%
P65	0.069%
P66	0.069%
P67	0.069%
P68	0.069%
P69	0.069%
P70	0.069%
P71	0.069%
P72	0.069%
P73	0.069%
P74	0.069%
P75	0.069%
P76	0.069%
P77	0.069%
P78	0.069%
P79	0.069%
P80	0.069%
P81	0.069%
P82	0.069%
P83	0.069%
P84	0.069%

P85	0.069%
P86	0.069%
P87	0.069%
P88	0.069%
P89	0.127%
P90	0.069%
P91	0.056%
P92	0.069%
P93	0.069%
P94	0.110%
P95	0.110%
P96	0.110%
P97	0.066%
P98	0.066%
P99	0.066%
P100	0.066%
P101	0.066%
P102	0.066%
P103	0.066%
P104	0.066%
P105	0.066%
P106	0.066%
P107	0.066%
P108	0.066%
P109	0.066%
P110	0.066%
P111	0.066%
P112	0.066%
P113	0.066%
P114	0.066%
P115	0.066%
P116	0.066%
P117	0.066%
P118	0.066%
P119	0.066%
P120	0.066%
P121	0.066%
P122	0.066%
P123	0.066%
P124	0.066%
P125	0.066%

P126	0.054%
P127	0.066%
P128	0.066%
P129	0.108%
P130	0.108%
P131	0.108%
SR1	0.017%
SR2	0.017%
SR3	0.017%
SR4	0.017%
SR5	0.035%
SL1	0.007%
SL2	0.007%
SL3	0.003%
SL4	0.003%
SL5	0.003%
SL6	0.003%
SL7	0.003%
SL8	0.003%
SL9	0.003%
SL10	0.003%
SL11	0.003%
SL12	0.003%
SL13	0.003%
SL14	0.003%
SL15	0.003%
SL16	0.003%
SL17	0.003%
SL18	0.003%
SL19	0.003%
SL20	0.003%
SL21	0.003%
SL22	0.003%
SL23	0.003%
SL24	0.003%
SL25	0.003%
SL26	0.003%
Total	100.000%

EXHIBIT D

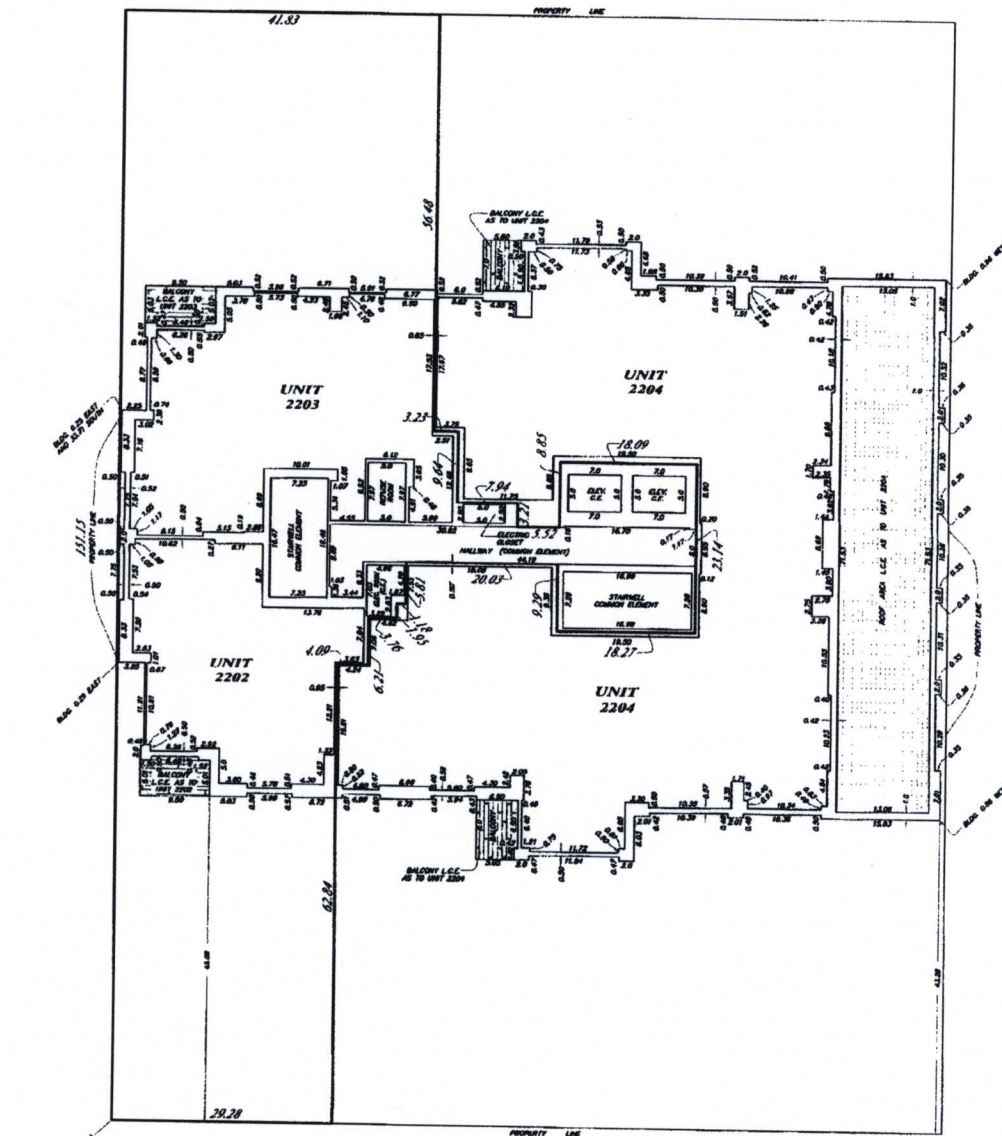
(attached hereto)

GRAND ON GRAND CONDOMINIUM

TWENTY - SECOND FLOOR

ORDER NO.
08-0615

Scale - 1 inch = 10 feet



HORIZONTAL PLACES SHOWN HEREON ARE MEASURED FROM TOP OF FINISHED FLOOR TO BOTTOM OF FINISHED CEILING.

VERTICAL PLACES SHOWN HEREON ARE MEASURED FROM TO AND ALONG FINISHED FACE OF INTERIOR WALLS.

UPPER ELEVATION OF UNIT THIS FLOOR ONLY - 120.82
LOWER ELEVATION OF UNIT THIS FLOOR ONLY - 221.42

ELEVATIONS SHOWN HEREON ARE IN REFERENCE TO CITY OF CHICAGO STANDARD BENCH MARK NO. 1279, LOCATED AT THE SOUTHWEST CORNER OF ILLINOIS AND WELLS STREET, ELEVATION 16.377.

PREPARED BY:
JENN & SON PROFESSIONAL
LAND SURVEYORS P.C.
1415 BRUNNEN ST.
EVA GRIVE VILLAGE, IL 60087
(847) 744-8888



Jens K. Doe
Professional Land Surveyors, P.C.

ORDER NO.
08-0615

PLAT OF SURVEY
of

FOR PLAT OF SURVEY SEE PAGE 1 OF 2

GRAND ON GRAND CONDOMINIUM

PARCEL 1 (1st through 20th Floors)

LOTS 1, 2, 3, 4, 5 AND THE SOUTHWEST HALF OF LOT 6 LYING BELOW A HORIZONTAL PLANE OF 209.58 CITY OF CHICAGO DATUM, IN BLOCK 13 IN NEWBURY'S ADDITION TO CHICAGO IN SECTION 9, TOWNSHIP 39 NORTH, RANGE 14, EAST OF THE THIRD PRINCIPAL MERIDIAN, EXCEPTING THEREFROM THE FOLLOWING DESCRIBED PARCELS:

(EXCEPTION PARCEL 1)

[illegible]

*** EXCEPTION PARCELS 21**

SECTION 16: 1. A 1/4 OF THE SOUTH HALF OF PLAT 4, LYING BEHIND A SUBSIDIARY PLANE OF 1/80 IN CITY OF CHICAGO DATED, AND LYING ABOVE A HORIZONTAL PLANE OF 1/47 CITY OF CHICAGO DATED, IN BLOCK 11 OF NEWBURN IS ADDITION TO CHICAGO IS SECTION 9, TOWNSHIP 38 NORTH, RANGE 4, EAST OF THE THIRD PRINCIPAL MERIDIAN, DESCRIBED AS FOLLOWS: BEGINNING AT A POINT 1/4 THE SOUTH OF 13 AND 13 FEET WEST OF THE EAST CORNER OF SAID LOT 1, THENCE SOUTH 1/4 DEGREE 15' 30" WEST, WITH THE EAST LINE OF SAID LOT 1, A DISTANCE OF 66 FEET; THENCE WEST PERPENDICULAR TO THE LAST DESCRIBED LINE, A DISTANCE OF 1/47 CITY OF CHICAGO DATED, THENCE SOUTH PARALLEL TO THE EAST LINE OF SAID LOT 1, A DISTANCE OF 2.61 FEET; THENCE WEST PERPENDICULAR TO THE LAST DESCRIBED LINE, A DISTANCE OF 2.19 FEET; THENCE SOUTH PARALLEL TO THE EAST LINE OF SAID LOT 1, A DISTANCE OF 71.33 FEET; THENCE WEST PERPENDICULAR TO THE LAST DESCRIBED LINE, A DISTANCE OF 1/47 CITY OF CHICAGO DATED, THENCE NORTH PARALLEL WITH THE EAST LINE OF SAID LOT 1, A DISTANCE OF 15.51 FEET; THENCE WEST PERPENDICULAR TO THE LAST DESCRIBED LINE, A DISTANCE OF 2.19 FEET; THENCE NORTH PARALLEL TO THE EAST LINE OF SAID LOT 1, A DISTANCE OF 1/47 CITY OF CHICAGO DATED, THENCE WEST PERPENDICULAR TO THE LAST DESCRIBED LINE, A DISTANCE OF 1.58 FEET; THENCE NORTH PARALLEL TO THE EAST LINE OF SAID LOT 1, A DISTANCE OF 1/47 CITY OF CHICAGO DATED, THENCE WEST PERPENDICULAR TO THE LAST DESCRIBED LINE, A DISTANCE OF 1.76 FEET; THENCE NORTH PARALLEL TO THE EAST LINE OF SAID LOT 1, A DISTANCE OF 1/47 CITY OF CHICAGO DATED, THENCE WEST PERPENDICULAR TO THE LAST DESCRIBED LINE, A DISTANCE OF 1.58 FEET; THENCE NORTH PARALLEL TO THE EAST LINE OF SAID LOT 1, A DISTANCE OF 2.40 FEET; THENCE WEST PERPENDICULAR TO THE LAST DESCRIBED LINE, A DISTANCE OF 1/47 CITY OF CHICAGO DATED, THENCE NORTH PARALLEL WITH THE EAST LINE OF SAID LOT 1, A DISTANCE OF 16.97 FEET; THENCE WEST PERPENDICULAR TO THE LAST DESCRIBED LINE, A DISTANCE OF 2.94 FEET; THENCE SOUTH PARALLEL WITH THE EAST LINE OF SAID LOT 1, A DISTANCE OF 1/47 CITY OF CHICAGO DATED, THENCE WEST PERPENDICULAR TO THE LAST DESCRIBED LINE, A DISTANCE OF 2.61 FEET; THENCE NORTH PARALLEL WITH THE EAST LINE OF SAID LOT 1, A DISTANCE OF 1/47 CITY OF CHICAGO DATED, THENCE WEST PERPENDICULAR TO THE LAST DESCRIBED LINE, A DISTANCE OF 2.43 FEET; THENCE SOUTH PARALLEL WITH THE EAST LINE OF SAID LOT 1, A DISTANCE OF 1/47 CITY OF CHICAGO DATED, THENCE WEST PERPENDICULAR TO THE LAST DESCRIBED LINE, A DISTANCE OF 2.30 FEET TO THE POINT OF BEGINNING.

(EXCEPTION PARCELS 1.)

[illegible]

(EXCEPTION PARCEL #)

[illegible]

(EXCEPTION PARCEL 51)

THAT PART OF LOTS 1, 2, 3, 4, 5 AND THE SOUTH HALF OF LOT 6 LYING BELOW A HORIZONTAL PLANE OF 36.182
FEET CHICAGO DATUM, AND LYING ABOVE A HORIZONTAL PLANE OF 14.75 CITY OF CHICAGO DATUM,
BLOCK 11 IN NEWBERRY'S ADDITION TO CHICAGO IN SECTION 9, TOWNSHIP 19 NORTH, RANGE 14, EAST OF THE THIRD
EAST 1/4 IN NEWBERRY, DESCRIBED AS FOLLOWS: BEGINNING AT A POINT IN 31 FEET NORTH AND 19 FEET EAST OF
THE NORTHEAST CORNER OF THE NORTHWEST CORNER OF THE SECTION 9, TOWNSHIP 19 NORTH, RANGE 14, EAST OF THE
S/4 LOT 6, A DISTANCE OF 12.04 FEET; THENCE WEST PERPENDICULAR TO THE LAST DESCRIBED LINE, A
DISTANCE OF 8.00 FEET; THENCE NORTH PARALLEL WITH THE EAST LINE OF SAID LOTS, A DISTANCE OF 1.64 FEET; THENCE WEST
PERPENDICULAR TO THE LAST DESCRIBED LINE, A DISTANCE OF 162 FEET; THENCE NORTH PARALLEL WITH THE EAST
LINE OF SAID LOTS, A DISTANCE OF 1.64 FEET; THENCE WEST PERPENDICULAR TO THE LAST DESCRIBED LINE,
A DISTANCE OF 9.13 FEET; TO THE POINT OF BEGINNING, ALL IN COOK COUNTY, ILLINOIS.

PARCEL 2 : (21st and 22nd Floors)

LOTS 1, 2, 3, 4, 5 AND THE SOUTH HALF OF LOT 6, LYING ABOVE A HORIZONTAL PLANE OF +268.58 CITY OF CHICAGO DATUM, AND LYING BELOW A HORIZONTAL PLANE OF -220.41 CITY OF CHICAGO DATUM, AND ALSO LYING ABOVE A HORIZONTAL PLANE OF +274.47 CITY OF CHICAGO DATUM, AND LYING BELOW A HORIZONTAL PLANE OF +284.18 CITY OF CHICAGO DATUM, IN BLOCK 13 IN NEARBY'S ADDITION TO CHICAGO IN SECTION 9, TOWNSHIP 36 NORTH, RANGE 14, EAST OF THE THIRD PRINCIPAL MERIDIAN, IN COOK COUNTY, ILLINOIS

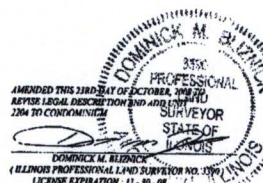
PARTIAL 1: (23rd, 24th and 25th Floors

LOTS 2, 3, 4, 5 AND THE SOUTH HALF OF LOT 6, LYING ABOVE A HORIZONTAL PLANE OF 423.90 CITY OF CHICAGO DATUM, AND LYING BELOW A HORIZONTAL PLANE OF -262.90 CITY OF CHICAGO DATUM, IN BLOCK 13 IN SEVENTH ADDITION TO CHICAGO IN SECTION 9, TOWNSHIP 39 NORTH, RANGE 14, EAST OF THE THIRD PRINCIPAL MERIDIAN, IN COOK COUNTY, ILLINOIS

PARCEL 4 : (Units 2202 and 2203)

[illegible]

PARCEL 5 : (Unit 2704)

[illegible]

AS AMENDED
EXHIBIT D
PAGE 2 OF 2

Jens K. Doe
Professional Land Surveyors, P.C.

PLAT OF SURVEY

FOR PLAT OF SURVEY SEE PAGE 1 OF 22

GRAND ON GRAND CONDOMINIUM

PIN # 17-09-237-011
thru
-014

PARCEL 1: (1st through 20th Floors)

LOTS 1, 2, 3, 4, 5 AND THE SOUTH HALF OF LOT 6 LYING BELOW A HORIZONTAL PLANE OF 209.58 CITY OF CHICAGO DATUM, IN BLOCK 13 IN NEWBERRY'S ADDITION TO CHICAGO IN SECTION 9, TOWNSHIP 39 NORTH, RANGE 14 EAST OF THE THIRD PRINCIPAL MERIDIAN, EXCEPTING THEREFROM THE FOLLOWING DESCRIBED PARCELS:

(EXCEPTION PARCEL 1):

(DISCOUNT PARCELS)
THAT PART OF LOTS 1, 2, 3, 4 AND THE SOUTH HALF OF PLANE 6, LYING BELOW A HORIZONTAL PLANE OF + 37.2 CITY
CHICAGO DATUM, AND LYING ABOVE A HORIZONTAL PLANE OF + 14.75 CITY CHICAGO DATUM, IN BLOCK 13 IN
NORTHWEST ADDITION TO CHICAGO IN SECTION 9, TOWNSHIP 36 NORTH, RANGE 14 EAST OF THE THIRD PRINCIPAL
SOUTHERLY MERIDIAN, DESCRIBED AS FOLLOWS: BEGINNING AT A POINT 50.28 FEET WEST OF THE NORTH
SOUTHEAST CORNER OF SAID LOT 1; THENCE NORTH PARALLEL WITH THE EAST LINE OF SAID LOT 1, A DISTANCE OF
16.05 FEET; THENCE NORTH PARALLEL WITH THE EAST LINE OF SAID LOT 1, A DISTANCE OF 1.8 FEET; THENCE
FIRST, AN ARC DISTANCE OF 8.85 FEET; THENCE NORTH PARALLEL WITH THE EAST LINE OF SAID LOT 1, A DISTANCE OF
11.81 FEET; THENCE NORTHWESTERLY ALONG A STRAIGHT LINE WITH THE EAST LINE OF SAID LOTS, A DISTANCE OF
45.14 FEET NORTH AND 72.00 FEET WEST OF THE SOUTHWEST CORNER OF SAID LOT 1, TO A POINT, SAID POINT
WESTERLY OF SAID LOTS, A DISTANCE OF 1.18 FEET; THENCE WEST PERPENDICULAR TO SAID LINE, A DISTANCE OF
1.54 FEET; THENCE WEST PERPENDICULAR TO SAID LINE, A DISTANCE OF 1.54 FEET; THENCE NORTH PARALLEL WITH THE EAST LINE OF SAID LOTS,
THENCE NORTH PARALLEL WITH THE EAST LINE OF SAID LOTS, A DISTANCE OF 0.48 FEET; THENCE
NORTH PARALLEL WITH THE EAST LINE OF SAID LOTS, A DISTANCE OF 1.43 FEET; THENCE WEST
LINE OF SAID LOT 1, A DISTANCE OF 5.00 FEET; THENCE SOUTHERLY ALONG A STRAIGHT LINE, A DISTANCE OF
SAID LOT 1; THENCE SOUTH PARALLEL WITH THE EAST LINE OF SAID LOTS, A DISTANCE OF THE SOUTHWEST CORNER
OF NONPERPENDICULAR TO THE LAST DESCRIBED LINE, A DISTANCE OF 2.45 FEET; THENCE EAST
LINE OF SAID LOTS, A DISTANCE OF 20.92 FEET; THENCE EAST PERPENDICULAR TO SAID LINE, A DISTANCE OF
A DISTANCE OF 22.87 FEET TO THE POINT OF BEGINNING, ALL IN COOK COUNTY, ILLINOIS.

(EXCEPTION PARCEL 2):

[illegible]

(EXCEPTION PARCEL 3).

(EXCERPT PARCELS 3-7)
THAT PART OF LOTS 2, 3, 4 & 5 AND THE SOUTH HALF OF LOT 6, LYING BELOW A HORIZONTAL PLANE OF + 33.05 CITY
OF CHICAGO DATUM, AND LYING ABOVE A HORIZONTAL PLANE OF + 14.75 CITY OF CHICAGO DATUM, IN BLOCK 13 IN
NEWBERRY'S ADDITION TO CHICAGO IN SECTION 9,
AS HEREIN DESCRIBED AS FOLLOWS : BEGINNING AT A POINT 5.18 FEET EAST AND 1.41 FEET WEST OF THE
10.29 FEET; THENCE NORTH PERPENDICULAR TO THE LAST DISCRIBED LINE, WITH THE EAST LINE OF SAID LOTS, A DISTANCE OF
PARALLEL; WITH THE EAST LINE OF SAID LOTS, TO THE LAST DISCRIBED LINE, A DISTANCE OF 1.53 FEET; THENCE NORTH
DISCRIBED LINE, A DISTANCE OF 1.53 FEET; THENCE NORTH PERPENDICULAR TO THE LAST DISCRIBED LINE, WITH THE EAST
LINE OF 10.30 FEET; THENCE WEST PERPENDICULAR TO THE LAST DISCRIBED LINE, WITH THE EAST LINE OF SAID LOTS, A
NORTH PERPENDICULAR; WITH THE EAST LINE OF SAID LOTS, A DISTANCE OF 2.38 FEET;
PERPENDICULAR TO THE LAST DISCRIBED LINE, A DISTANCE OF 19.54 FEET; THENCE NORTH PERPENDICULAR TO THE
LINE OF SAID LOTS, A DISTANCE OF 23.10 FEET; THENCE EAST PERPENDICULAR TO THE LAST DISCRIBED LINE, WITH THE EAST
DISTANCE OF 0.31 FEET; THENCE NORTH PERPENDICULAR TO THE LAST DISCRIBED LINE, A
THE EAST PERPENDICULAR TO THE LAST DISCRIBED LINE, A DISTANCE OF 1.37 FEET; THENCE NORTH PERPENDICULAR TO THE LAST
WEST LINE OF SAID LOTS, A DISTANCE OF 1.69 FEET; THENCE EAST PERPENDICULAR TO THE LAST DISCRIBED LINE, A
DISCRIBED LINE, A DISTANCE OF 0.50 FEET; THENCE EAST PERPENDICULAR TO THE LAST DISCRIBED LINE, WITH THE EAST LINE OF SAID LOTS, A
DISTANCE OF 10.77 FEET;
THENCE NORTH PERPENDICULAR TO THE LAST DISCRIBED LINE, A DISTANCE OF 4.00 FEET; THENCE EAST PERPENDICULAR TO THE LAST
PERPENDICULAR TO THE LAST DISCRIBED LINE, A DISTANCE OF 0.10 FEET; THENCE EAST PERPENDICULAR TO THE LAST
LINE OF SAID LOTS, A DISTANCE OF 2.40 FEET; THENCE NORTH PERPENDICULAR TO THE LAST DISCRIBED LINE, WITH THE EAST
DISTANCE OF 0.53 FEET; THENCE NORTH PERPENDICULAR TO THE LAST DISCRIBED LINE, WITH THE EAST LINE OF SAID LOTS, A
DISTANCE OF 1.80 FEET;
THENCE EAST PERPENDICULAR TO THE LAST DISCRIBED LINE, A DISTANCE OF 1.70 FEET TO THE POINT OF BEGINNING

ALL IN COOK COUNTY, ILLINOIS.

(EXCEPTION PARCEL 4):

[illegible]

(EXCEPTION PARCELS):

(EXCERPT PARCELS 5):
THAT PART OF LOTS 1, 2, 4, 5 AND THE SOUTH HALF OF LOT 6 LYING BELOW A HORIZONTAL PLANE OF ± 37.2
CITY OF CHICAGO DATUM, AND LYING ABOVE A HORIZONTAL PLANE OF + 147.3 CITY OF CHICAGO DATUM,
BLK 13 IN NEFFERT'S ADDITION TO CHICAGO IN SECTION 36 OF TOWNSHIP 39 NORTH, RANGE 14, EAST OF THE THIRD
PRINCIPAL MERIDIAN, DESCRIBED AS FOLLOWS: BEGINNING AT A POINT ON THE NORTH LINE AND 57.81 FEET EAST OF
SAID LOTS, A DISTANCE OF 0.89 FEET; THENCE SOUTHERLY PERPENDICULAR TO THE LAST DESCRIBED LINE, A DISTANCE
OF 0.89 FEET; THENCE NORTH PARALLEL WITH THE EAST LINE OF SAID LOTS TO THE LAST DESCRIBED LINE, A DISTANCE
PERPENDICULAR TO THE LAST DESCRIBED LINE, A DISTANCE OF 2.06 FEET; THENCE WEST
LINE OF SAID LOTS, A DISTANCE OF 10.82 FEET; THENCE NORTH PARALLEL WITH THE LAST DESCRIBED LINE, A
DISTANCE OF 9.53 FEET, TO THE POINT OF BEGINNING, ALL IN COOK COUNTY, ILLINOIS.

PARCEL 2 : (21st and 27th Floors)

LOTS 1, 2, 3, 4, 5 AND THE SOUTH HALF OF LOT 6, LYING ABOVE A HORIZONTAL PLANE OF +309.58 CITY OF CHICAGO DATUM, AND LYING BELOW A HORIZONTAL PLANE OF +320.41 CITY OF CHICAGO DATUM, AND ALSO LYING ABOVE A HORIZONTAL PLANE OF +274.47 CITY OF CHICAGO DATUM, AND LYING BELOW A HORIZONTAL PLANE OF +284.30 CITY OF CHICAGO DATUM, IN BLOCK 13 IN NEWBERRY'S ADDITION TO CHICAGO IN SECTION 9, TOWNSHIP 39 NORTH, RANGE 14, EAST OF THE THIRD PRINCIPAL MERIDIAN, IN COOK COUNTY, ILLINOIS

PARCEL 3: (23rd, 24th and 25th Floors)

LOTS 1, 2, 3, 4, 5 AND THE SOUTH HALF OF LOT 6, LYING ABOVE A HORIZONTAL PLANE OF +231.90 CITY OF CHICAGO DATUM, AND LYING BELOW A HORIZONTAL PLANE OF +262.98 CITY OF CHICAGO DATUM, IN BLOCK 13 IN NEWBERRY'S ADDITION TO CHICAGO IN SECTION 9, TOWNSHIP 39 NORTH, RANGE 14, EAST OF THE THIRD PRINCIPAL MERIDIAN, COOK COUNTY, ILLINOIS

PARCEL 4: (Units 2202 and 2203)

[illegible]

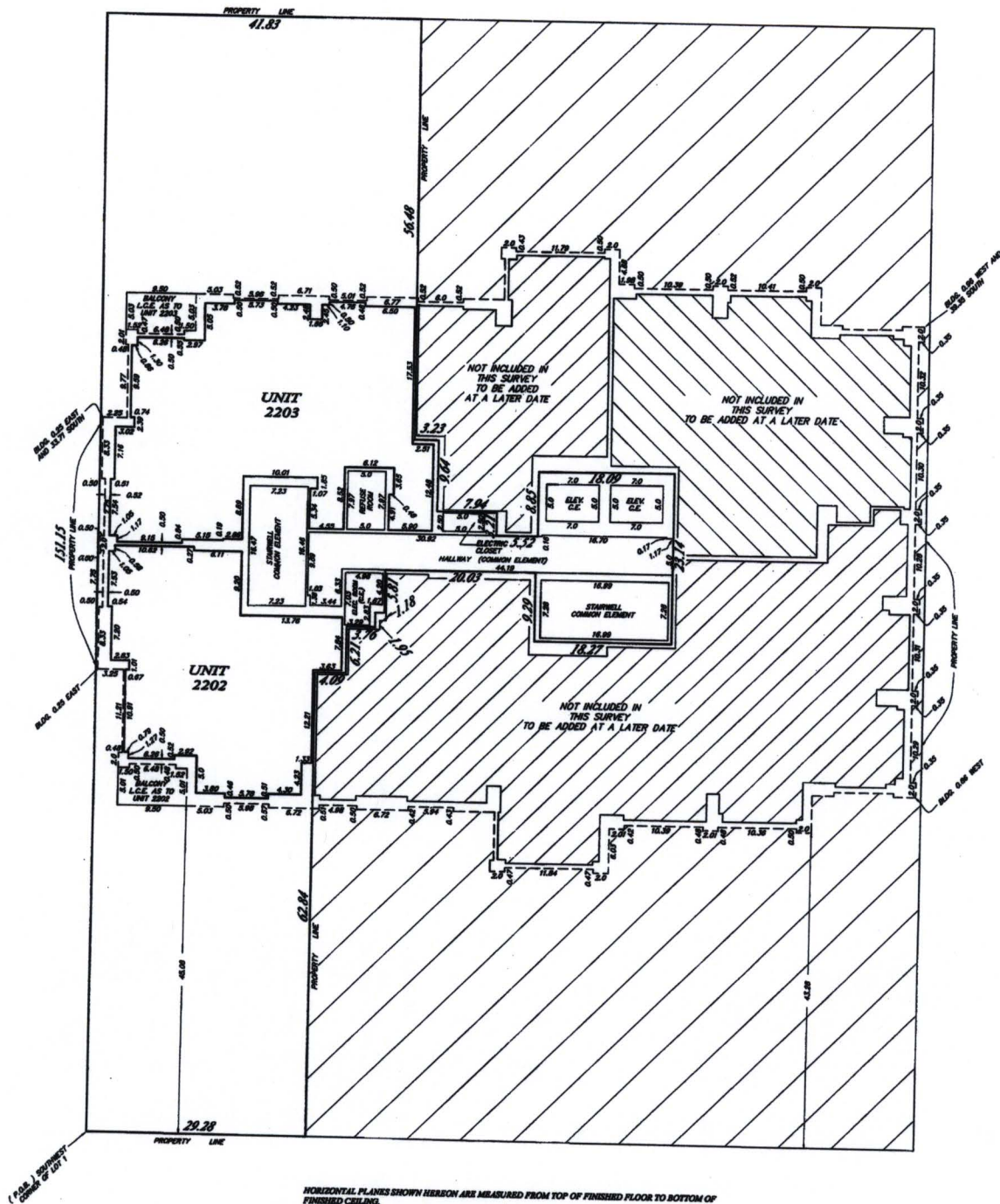
AMENDED THIS 12TH DAY OF JANUARY 2005 TO
REVISE LEGAL DESCRIPTION OF PARCELS 2005 TO
AND 2203 TO CONDOMINIUM AND UNIT 2202

[Signature]
DOMINICK M. BLINICK
(ILLINOIS PROFESSIONAL LAND SURVEYOR NO. 314)

AS AMENDED
EXHIBIT D
PAGE 2 OF 22

ORDER NO.
05-2676

Scale - 1 inch = 10 feet



HORIZONTAL PLANES SHOWN HEREON ARE MEASURED FROM TOP OF FINISHED FLOOR TO BOTTOM OF FINISHED CEILING.

INTERIOR VERTICAL PLANES SHOWN HEREON ARE MEASURED FROM, TO AND ALONG FINISHED FACE OF INTERIOR WALLS.

UPPER ELEVATION OF UNIT THIS FLOOR ONLY - 230.92
LOWER ELEVATION OF UNIT THIS FLOOR ONLY - 221.42

ELEVATIONS SHOWN HEREON ARE IN REFERENCE TO CITY OF CHICAGO STANDARD BENCH MARK NO. 2279, LOCATED AT THE SOUTHWEST CORNER OF ILLINOIS AND WELLS STREET. ELEVATION: 16.577.

**PREPARED BY:
JENS K DOE PROFESSIONAL
LAND SURVEYORS P.C.
1425 BRUMMEL ST.
ELK GROVE VILLAGE, IL 60007
(847) 734-8330**

