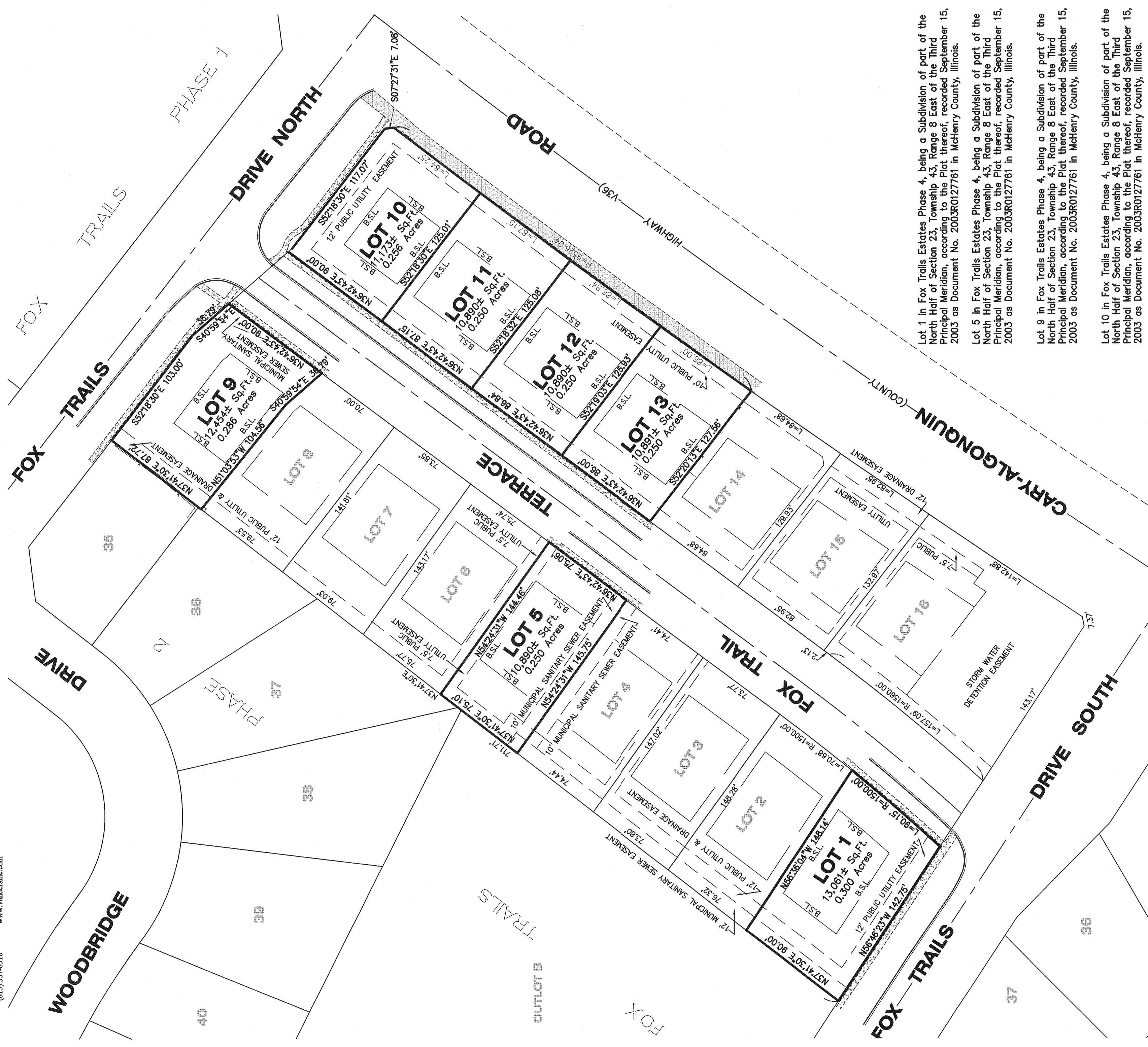




Vanderstappen Surveying & Engineering, Incorporated  
 1316 North Madison Street, Woodstock, Illinois  
 (815) 337-8310 www.vanderstapinc.com

# EXHIBIT



Lot 1 in Fox Trails Estates Phase 4, being a Subdivision of part of the North Half of Section 23, Township 43, Range 8 East of the Third Principal Meridian, according to the Plat thereof, recorded September 15, 2003 as Document No. 2003R0127761 in McHenry County, Illinois.

Lot 5 in Fox Trails Estates Phase 4, being a Subdivision of part of the North Half of Section 23, Township 43, Range 8 East of the Third Principal Meridian, according to the Plat thereof, recorded September 15, 2003 as Document No. 2003R0127761 in McHenry County, Illinois.

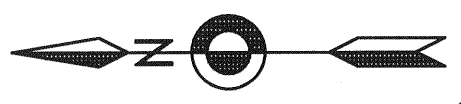
Lot 9 in Fox Trails Estates Phase 4, being a Subdivision of part of the North Half of Section 23, Township 43, Range 8 East of the Third Principal Meridian, according to the Plat thereof, recorded September 15, 2003 as Document No. 2003R0127761 in McHenry County, Illinois.

Lot 10 in Fox Trails Estates Phase 4, being a Subdivision of part of the North Half of Section 23, Township 43, Range 8 East of the Third Principal Meridian, according to the Plat thereof, recorded September 15, 2003 as Document No. 2003R0127761 in McHenry County, Illinois.

Lot 11 in Fox Trails Estates Phase 4, being a Subdivision of part of the North Half of Section 23, Township 43, Range 8 East of the Third Principal Meridian, according to the Plat thereof, recorded September 15, 2003 as Document No. 2003R0127761 in McHenry County, Illinois.

Lot 12 in Fox Trails Estates Phase 4, being a Subdivision of part of the North Half of Section 23, Township 43, Range 8 East of the Third Principal Meridian, according to the Plat thereof, recorded September 15, 2003 as Document No. 2003R0127761 in McHenry County, Illinois.

Lot 13 in Fox Trails Estates Phase 4, being a Subdivision of part of the North Half of Section 23, Township 43, Range 8 East of the Third Principal Meridian, according to the Plat thereof, recorded September 15, 2003 as Document No. 2003R0127761 in McHenry County, Illinois.



CLIENT: SHOREWOOD PROPERTY INVESTMENTS  
 DRAWN BY: SES CHECKED BY: WJV  
 SCALE: 1"=50' SEC. 23 T. 43 R. 08 E.  
 BASIS OF BEARING: PER RECORD SUBDIVISION  
 P.I.N.: 19-23-129-017,021,025,001,002,003,004  
 JOB NO.: 130494 I.D. ETO  
 FIELDWORK COMP.: 8/20/13 BK. PG.  
 ALL DISTANCES SHOWN IN FEET AND DECIMAL PARTS THEREOF CORRECTED TO 68° F.

PLATS 2013 0400-0589\130494\130494-LS1.dwg-Layout1-8/22/2013 8:27 PM