

FOR SALE

# INVESTMENT OPPORTUNITY

20550 - 20660 INDIAN CREEK ROAD

Unincorporated Hawthorn Woods, Illinois



[www.cbre.us/lsgoakbrook](http://www.cbre.us/lsgoakbrook)

CBRE

# FOR SALE INVESTMENT OPPORTUNITY

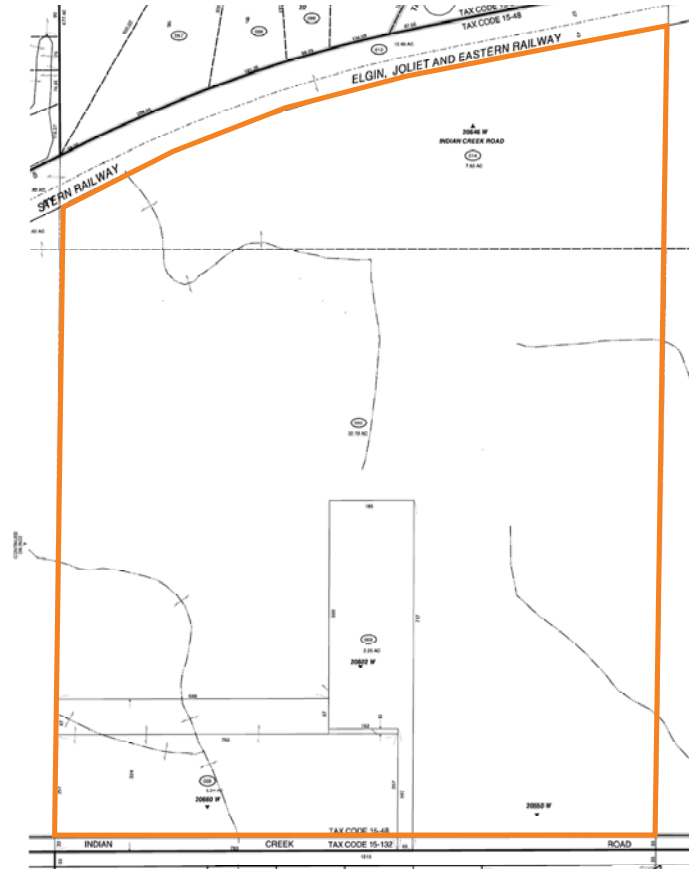
**20550-20660 INDIAN CREEK RD**  
Unincorporated Hawthorn Woods, Illinois



## PROPERTY HIGHLIGHTS

- + ±48 acres located in unincorporated Lake County
- + Property is contiguous to both Long Grove and Hawthorn Woods
- + Located in the highly regarded Stevenson High School District
- + Parcel Numbers: 14-02-100-003, 14-02-100-005, 14-02-100-009, 14-02-100-014
- + Taxes: \$10,107.17
- + Asking: \$1,850,000
- + Please call for additional information

## SITE PLAN





# FOR SALE INVESTMENT OPPORTUNITY

**20550-20660 INDIAN CREEK RD**  
Unincorporated Hawthorn Woods, Illinois



**SITE AERIAL**



[www.cbre.us/lsgoakbrook](http://www.cbre.us/lsgoakbrook)

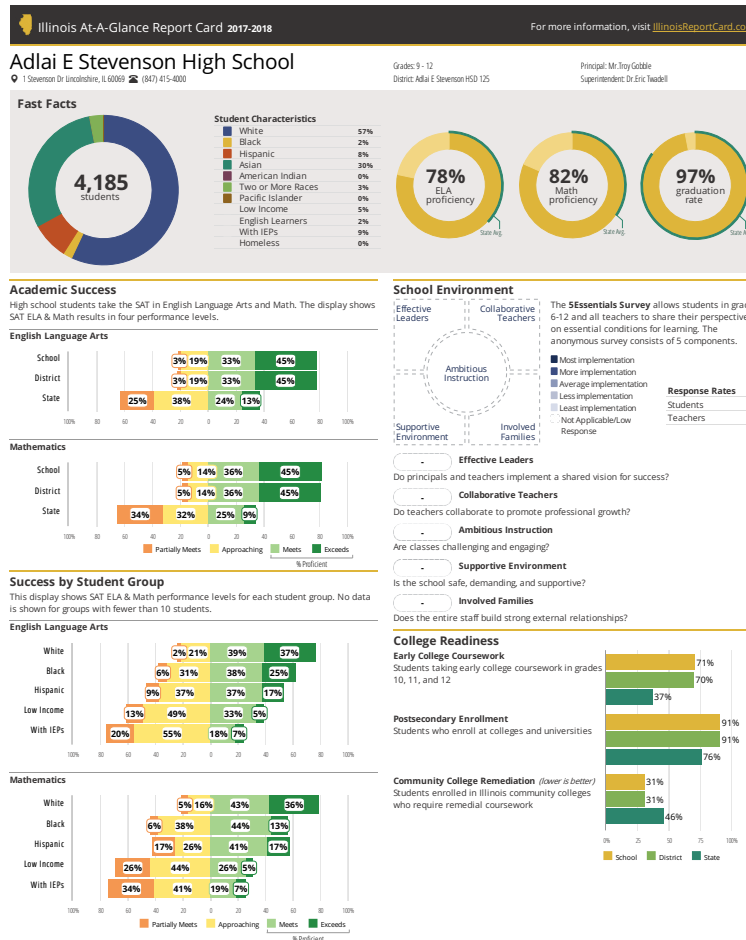
**CBRE**

# FOR SALE INVESTMENT OPPORTUNITY

**20550-20660 INDIAN CREEK RD**  
Unincorporated Hawthorn Woods, Illinois



## SCHOOL REPORT CARD



[www.cbre.us/lsgoakbrook](http://www.cbre.us/lsgoakbrook)

**CBRE**

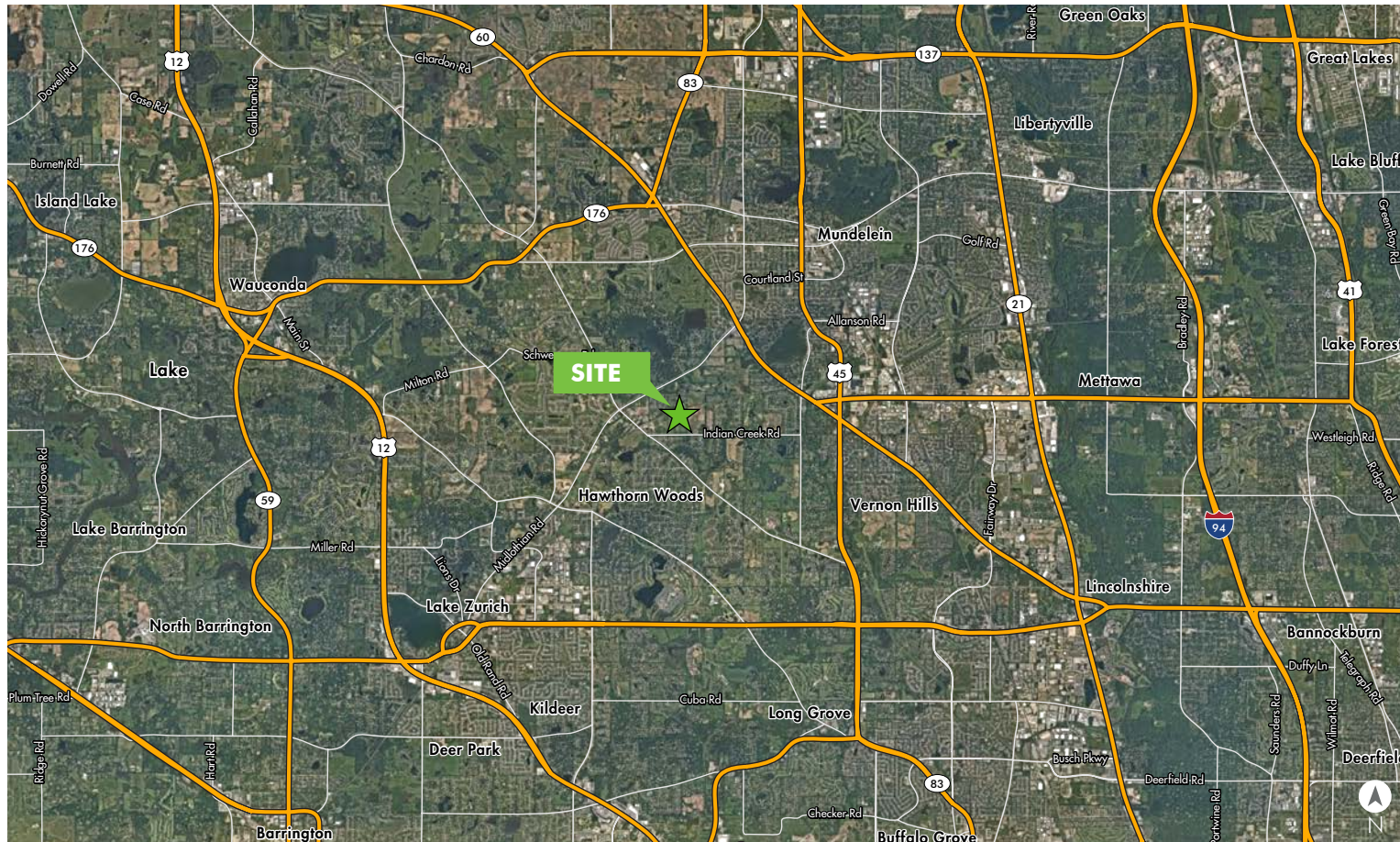


# FOR SALE INVESTMENT OPPORTUNITY

**20550-20660 INDIAN CREEK RD**  
Unincorporated Hawthorn Woods, Illinois



## LOCATION MAP



[www.cbre.us/lsgoakbrook](http://www.cbre.us/lsgoakbrook)

**CBRE**

# FOR SALE INVESTMENT OPPORTUNITY

**20550-20660 INDIAN CREEK RD**

Unincorporated Hawthorn Woods, Illinois



## DEMOGRAPHIC SNAPSHOT

DEMOGRAPHIC SNAPSHOT	1 MILE	3 MILES	5 MILES
Population	2,521	44,081	123,369
Average Household Income	\$184,451	\$141,515	\$153,147
Average Housing Value	\$581,395	\$434,876	\$445,253



## FLOODPLAIN/WETLAND AERIAL



## CONTACT US

### BRIAN BUCKINGHAM

First Vice President

+1 630 573 7021

brian.buckingham@cbre.com

© 2019 CBRE, Inc. All rights reserved. This information has been obtained from sources believed reliable, but has not been verified for accuracy or completeness. You should conduct a careful, independent investigation of the property and verify all information. Any reliance on this information is solely at your own risk. CBRE and the CBRE logo are service marks of CBRE, Inc. All other marks displayed on this document are the property of their respective owners. Photos herein are the property of their respective owners. Use of these images without the express written consent of the owner is prohibited.

[www.cbre.us/lsgoakbrook](http://www.cbre.us/lsgoakbrook)

**CBRE**