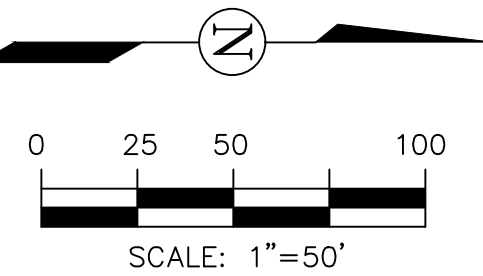


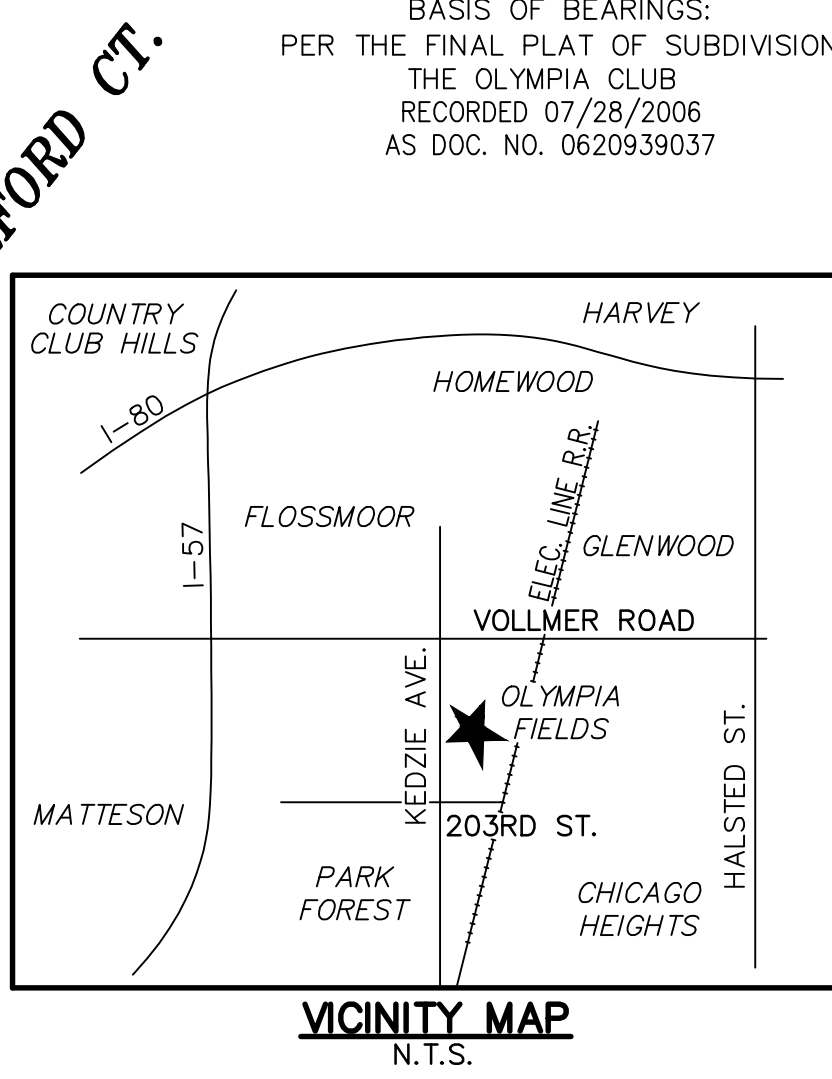
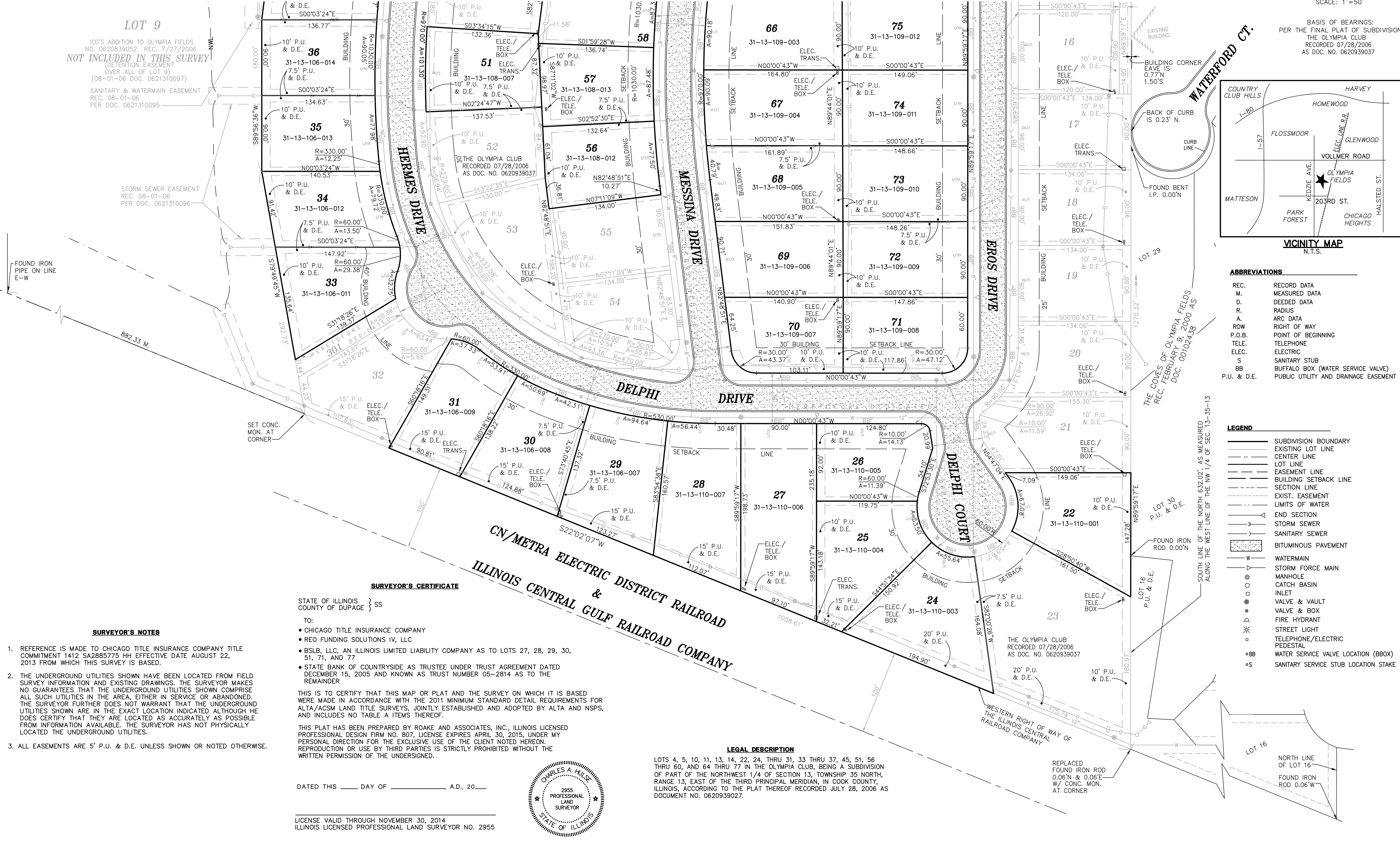
ALTA/ACSM LAND TITLE SURVEY

OF
PART OF THE NORTHWEST QUARTER OF SECTION 13, TOWNSHIP
35 NORTH, RANGE 13, EAST OF THE THIRD PRINCIPAL
MERIDIAN, COOK COUNTY, ILLINOIS



FOR CONTINUATION SEE SHEET 2 OF 2

FOR CONTINUATION SEE SHEET 2 OF 2



- ABBREVIATIONS**
- REC. RECORD DATA
 - M. MEASURED DATA
 - D. DEEDED DATA
 - R. RADIUS
 - A. ARC DATA
 - ROW RIGHT OF WAY
 - P.O.B. POINT OF BEGINNING
 - TELE. TELEPHONE
 - ELEC. ELECTRIC
 - S. SANITARY STUB
 - BB. BUFFALO BOX (WATER SERVICE VALVE)
 - P.U. & D.E. PUBLIC UTILITY AND DRAINAGE EASEMENT

- LEGEND**
- SUBDIVISION BOUNDARY
 - EXISTING LOT LINE
 - CENTER LINE
 - LOT LINE
 - EASEMENT LINE
 - BUILDING SETBACK LINE
 - SECTION LINE
 - LIMITS OF WATER
 - END SECTION
 - STORM SEWER
 - SANITARY SEWER
 - BITUMINOUS PAVEMENT
 - WATERMAIN
 - STORM FORCE MAIN
 - MANHOLE
 - CATCH BASIN
 - INLET
 - VALVE & VAULT
 - VALVE & BOX
 - FIRE HYDRANT
 - STREET LIGHT
 - TELEPHONE/ELECTRIC
 - PEDESTAL
 - BB. WATER SERVICE VALVE LOCATION (BBOX)
 - S. SANITARY SERVICE STUB LOCATION STAKE

SURVEYOR'S CERTIFICATE

STATE OF ILLINOIS
COUNTY OF DUPAGE } SS

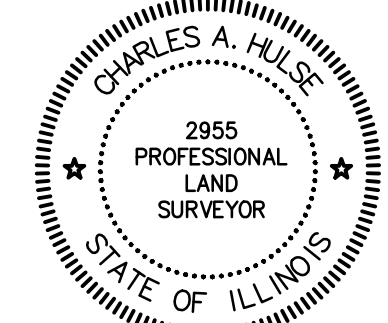
- TO:
- CHICAGO TITLE INSURANCE COMPANY
 - REO FUNDING SOLUTIONS IV, LLC
 - BSLB, LLC, AN ILLINOIS LIMITED LIABILITY COMPANY AS TO LOTS 27, 28, 29, 30, 51, 71, AND 77
 - STATE BANK OF COUNTRYSIDE AS TRUSTEE UNDER TRUST AGREEMENT DATED DECEMBER 15, 2005 AND KNOWN AS TRUST NUMBER 05-2814 AS TO THE REMAINDER

THIS IS TO CERTIFY THAT THIS MAP OR PLAT AND THE SURVEY ON WHICH IT IS BASED WERE MADE IN ACCORDANCE WITH THE 2011 MINIMUM STANDARD DETAIL REQUIREMENTS FOR ALTA/ACSM LAND TITLE SURVEYS, JOINTLY ESTABLISHED AND ADOPTED BY ALTA AND NSPS, AND INCLUDES NO TABLE A ITEMS THEREOF.

THIS PLAT HAS BEEN PREPARED BY ROAKE AND ASSOCIATES, INC., ILLINOIS LICENSED PROFESSIONAL DESIGN FIRM NO. 807, LICENSE EXPIRES APRIL 30, 2015, UNDER MY PERSONAL DIRECTION FOR THE EXCLUSIVE USE OF THE CLIENT NOTED HEREON. REPRODUCTION OR USE BY THIRD PARTIES IS STRICTLY PROHIBITED WITHOUT THE WRITTEN PERMISSION OF THE UNDERSIGNED.

DATED THIS ____ DAY OF _____ A.D. 20__

LICENSE VALID THROUGH NOVEMBER 30, 2014
ILLINOIS LICENSED PROFESSIONAL LAND SURVEYOR NO. 2955



LEGAL DESCRIPTION

LOTS 4, 5, 10, 11, 13, 14, 22, 24, THRU 31, 33 THRU 37, 45, 51, 56 THRU 60, AND 64 THRU 77 IN THE OLYMPIA CLUB, BEING A SUBDIVISION OF PART OF THE NORTHWEST 1/4 OF SECTION 13, TOWNSHIP 35 NORTH, RANGE 13, EAST OF THE THIRD PRINCIPAL MERIDIAN, IN COOK COUNTY, ILLINOIS, ACCORDING TO THE PLAT THEREOF RECORDED JULY 28, 2006 AS DOCUMENT NO. 0620939027.

SURVEYOR'S NOTES

1. REFERENCE IS MADE TO CHICAGO TITLE INSURANCE COMPANY TITLE COMMITMENT 1412 SA2885775 HH EFFECTIVE DATE AUGUST 22, 2013 FROM WHICH THIS SURVEY IS BASED.
2. THE UNDERGROUND UTILITIES SHOWN HAVE BEEN LOCATED FROM FIELD SURVEY INFORMATION AND EXISTING DRAWINGS. THE SURVEYOR MAKES NO GUARANTEES THAT THE UNDERGROUND UTILITIES SHOWN COMPRISE ALL SUCH UTILITIES IN THE AREA, EITHER IN SERVICE OR ABANDONED. THE SURVEYOR FURTHER DOES NOT WARRANT THAT THE UNDERGROUND UTILITIES SHOWN ARE IN THE EXACT LOCATION INDICATED ALTHOUGH HE DOES CERTIFY THAT THEY ARE LOCATED AS ACCURATELY AS POSSIBLE FROM INFORMATION AVAILABLE. THE SURVEYOR HAS NOT PHYSICALLY LOCATED THE UNDERGROUND UTILITIES.
3. ALL EASEMENTS ARE 5' P.U. & D.E. UNLESS SHOWN OR NOTED OTHERWISE.

ROAKE AND ASSOCIATES, INC.
CONSULTING ENGINEERS • LAND SURVEYORS • PLANNERS
1684 QUINCY AVENUE, SUITE 100A • NAPERVILLE, ILLINOIS 60640
TEL (630) 366-3232 • FAX (630) 366-3267

PREPARED FOR:
ROSANOVA & WHITAKER, LTD.
23 W. JEFFERSON STREET, SUITE 200
NAPERVILLE, ILLINOIS 60540
PH. (630) 355-4600 FX. (630) 352-3610

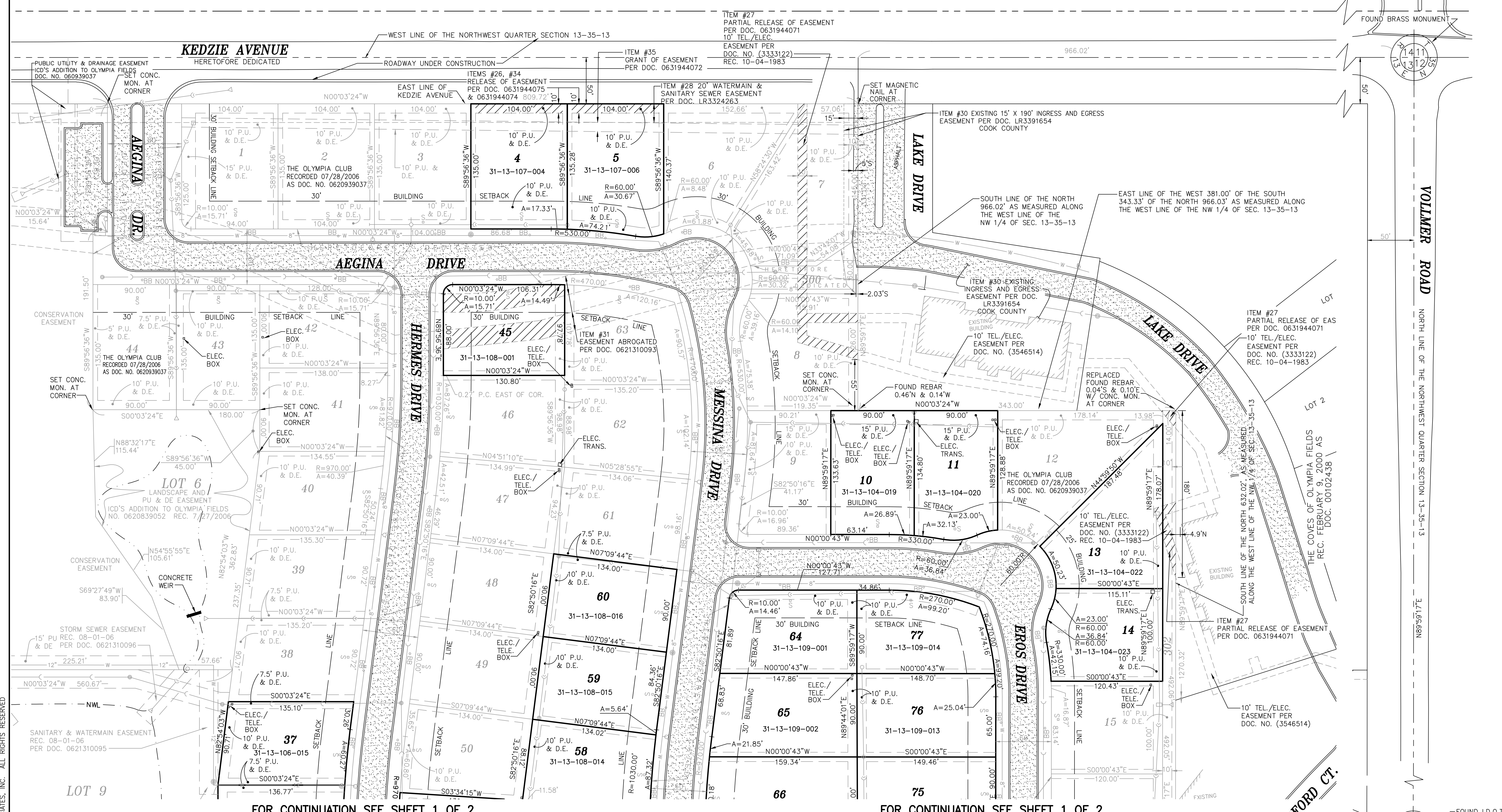
REVISIONS					
NO.	DATE	DESCRIPTION	NO.	DATE	DESCRIPTION

VARIOUS LOTS IN THE OLYMPIA CLUB
ALTA/LAND TITLE SURVEY

DRN./OKD. BY: PRS/CAH	FILE: 7721ALTA	F.L.D. BK./PG.: 168/1	SHEET NO. 1 OF 2
SCALE: 1"=50'	DATE: 09-13-13	JOB NO.: 772.001	

COPYRIGHT 2013 ROAKE AND ASSOCIATES, INC. ALL RIGHTS RESERVED.

G:\772001\7721ALTA.dwg, 9/16/2013 2:11:32 PM, P105



FOR CONTINUATION SEE SHEET 1 OF 2

FOR CONTINUATION SEE SHEET 1 OF 2

ROAKE AND ASSOCIATES, INC.
 CONSULTING ENGINEERS • LAND SURVEYORS • PLANNERS
 1684 QUINCY AVENUE, SUITE 100A • NAPERVILLE, ILLINOIS 60640
 TEL (630) 366-8232 • FAX (630) 366-3267

PREPARED FOR:
ROSANOVA & WHITAKER, LTD.
 23 W. JEFFERSON STREET, SUITE 200
 NAPERVILLE, ILLINOIS 60540
 PH. (630) 355-4600 FX. (630) 352-3610

REVISIONS					
NO.	DATE	DESCRIPTION	NO.	DATE	DESCRIPTION

VARIOUS LOTS IN THE OLYMPIA CLUB					
ALTA/LAND TITLE SURVEY					
DRN./OKD. BY: PRS/CAH	FILE: 7721ALTA	F.LD. BK./PG.: 168/1	SHEET NO. 2 OF 2		
SCALE: 1"=50'	DATE: 09-13-13	JOB NO.: 772.001			

© COPYRIGHT 2013 ROAKE AND ASSOCIATES, INC. ALL RIGHTS RESERVED

G:\772001\7721ALTA.dwg, 9/16/2013 2:12:38 PM, P105