

- LEGEND**
- R0 = CENTER OF TREE WEST OF ASPHALT
 - R1 = EAST EDGE OF ASPHALT
 - R2 = CENTER OF PATHWAY TO MERGE WITH PEDESTRIAN BRIDGE
 - R3 = CENTER OF PATH EAST OF CREEK MERGING WITH PEDESTRIAN BRIDGE
 - R4 = TREE SOUTH OF PATHWAY
 - R5 = TREE SOUTH OF WEST PATHWAY
 - R6 = INTERSECTION LINE OF BUILDING AND CENTER OF PEDESTRIAN BRIDGE
 - R3 = TREE SOUTH OF PATHWAY

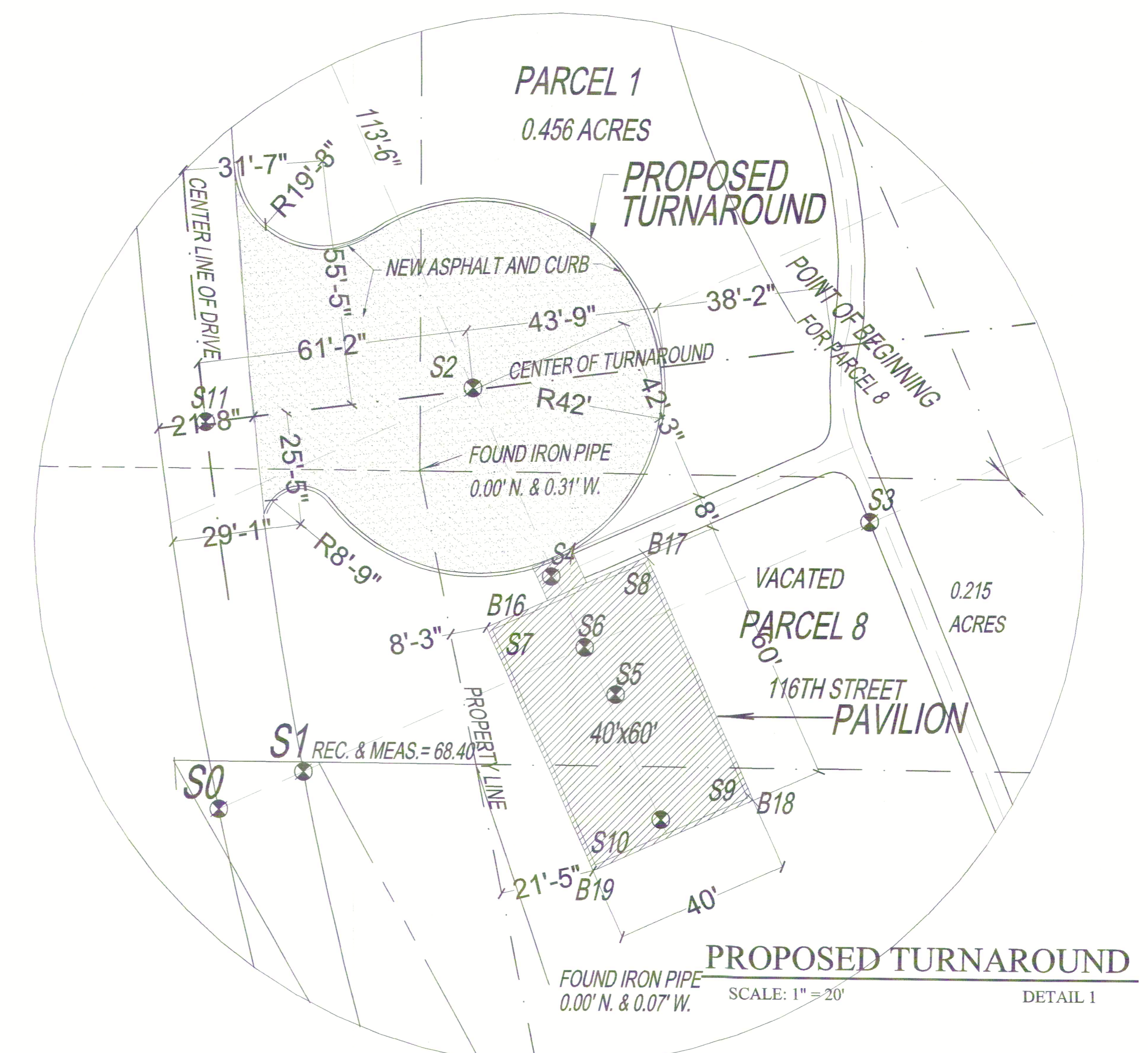
- S0 = WEST EDGE OF ASPHALT
- S1 = EAST EDGE OF ASPHALT
- S2 = INTERSECTION OF CUL DE SAC & CENTER OF PAVILION
- S3 = EDGE OF PAVER REFERENCE POINT
- S4 = TREE NORTH OF CIRCULAR DRIVE
- S5 = TWIN TREE SOUTH CIRCULAR DRIVE
- S6 = ENTRANCE OF PAVILION
- S7 = NW CORNER OF PAVILION
- S8 = NE CENTER OF PAVILION
- S9 = SE CORNER OF PAVILION
- S10 = SW CORNER OF PAVILION
- S11 = CENTER LINE OF ASPHALT DRIVE & PROPOSED TURNAROUND

- LAMP POST LOCATIONS**
- P1 = LAMP POST 1
 - P2 = LAMP POST 2
 - P3 = LAMP POST 3
 - P4 = LAMP POST 4

- SOIL BORING LOCATIONS**
- NORTH BUILDING ADDITION
 - B1, B2, B3 & B4
 - SOUTH BUILDING ADDITION
 - B5, B6, B7 & B8
 - EAST BUILDING ADDITION
 - B1, B2, B3 & B4

- PEDESTRIAN BRIDGE**
- B12, B13, B14 & B15
- PAVILION**
- B16, B17, B18 & B19

- SHEET LEGEND**
- C.01 LAND TITLE SURVEY
 - C1.0 PROPOSED SITE PLAN
 - C1.1 EXISTING BRIDGE DETAIL
 - C1.2 PROPOSED PEDESTRIAN BRIDGE DETAIL
 - C1.3 PROPOSED PAVILION AND DRIVE



NOTE:
 PROPOSED PEDESTRIAN BRIDGE SPAN OF FIFTY FEET (50'-0") MEETS AND EXCEEDS EXISTING STONY CREEK BRIDGE OF TWENTY ONE FEET FOUR INCHES (21'-4") BARRIER WIDTH

PROPOSED SITE PLAN
 SCALE: 1/32" = 1'-0"

PROPOSED TURNAROUND
 SCALE: 1" = 20'
 DETAIL 1

ADDITION TO CHATEAU BU-SCHÉ
 SITE PLAN
 11535 S. CICERO AVENUE
 ALSIP, ILLINOIS

REV.	DATE	REMARKS
1	05/21/02	REVISED PER DOT REQUEST
2		

GDA
 Group Design Associates, Inc.
 ARCHITECTS
 ENGINEERS
 CONSTRUCTION
 MANAGEMENT
 CONSULTING
 25 East Washington Street
 Suite 826
 Chicago, IL 60601
 (312) 449-9986
 FAX (312) 864-9909

DRAWN BY	SHEET NO.
EM	C1.0
CHECKED BY	DATE
RG	05/20/02